

ZOIA

GLYFADA

BY

Aspect

NEW CHAPTER BEGINS IN GLYFADA

ABOUT THE PROJECT

ZOI GLYFADA, IS A RESIDENTIAL DEVELOPMENT IN THE HEART OF GLYFADA WHERE MODERN ARCHITECTURE MEETS THE EFFORTLESS ELEGANCE OF THE ATHENIAN RIVIERA



A VISION OF YOUR
GOLDEN FUTURE



An aerial photograph of the Glyfada coastline in Athens, Greece. The image shows a large, sandy beach with many sun umbrellas, a marina filled with white yachts, and a modern residential area with white buildings and greenery. The sea is a vibrant blue, and the sky is clear with some clouds. In the background, the city of Athens and the mountains are visible.

ZOI

GLYFADA

GLYFADA IS ONE OF THE MOST WELL-KNOWN PLACES OF THE ATHENIAN RIVIERA. IT BLENDS THE ENERGY OF URBAN LIFE WITH A RELAXED ATMOSPHERE THAT'S HARD TO FIND ELSEWHERE IN ATHENS

ANOTHER KEY ADVANTAGE IS ITS PROXIMITY TO THE ELLINIKON PROJECT. THIS AMBITIOUS REDEVELOPMENT IS SET TO CREATE AN ENTIRELY NEW, MODERN CITY WITH PARKS, CULTURAL SPACES, AND CUTTING-EDGE INFRASTRUCTURE.

THE AREA IS ALSO CLOSE TO THE GLYFADA GOLF COURSE, OFFERING A RARE GREEN ESCAPE AND AN ADDED ELEMENT OF PRESTIGE AND LEISURE.

AREA OF THE PROJECT

THE AREA AROUND THE PROJECT STANDS OUT FOR ITS EXCELLENT LOCATION AND THE EASE IT BRINGS TO EVERYDAY LIFE. IT IS VERY CLOSE TO PUBLIC TRANSPORTATION, AND A NEW METRO STATION IS PLANNED NEARBY, FURTHER ENHANCING CONNECTIVITY TO CENTRAL ATHENS AND THE SOUTHERN SUBURBS



EVERYTHING NEARBY

,WITHIN A SHORT DISTANCE, THERE ARE KEY COMMERCIAL STREETS WITH SHOPS SUPERMARKETS, CAFÉS, AND RESTAURANTS, MAKING DAILY ERRANDS QUICK AND CONVENIENT



GLYFADA BEACH

GLYFADA BEACH IS ONE OF THE MOST POPULAR COASTAL DESTINATIONS ON THE ATHENIAN RIVIERA OFFERING ACTIVITIES AND EXPERIENCES YEAR-ROUND. DURING THE SUMMER MONTHS, IT IS IDEA FOR SWIMMING, WATER SPORTS, BEACH BARS, AND SEASIDE RELAXATION, WHILE IN WINTER IT BECOMES A PEACEFUL SETTING FOR WALKS BY THE SEA, OUTDOOR EXERCISE, AND ENJOYING THE NATURALLANDSCAPE

THE GLYFADA GOLF COURSE

THE GLYFADA GOLF COURSE IS A GREEN OASIS ON THE ATHENIAN RIVIERA, OFFERING A UNIQUE BLEND OF SPORT, LEISURE, AND NATURAL BEAUTY JUST MINUTES FROM THE SEA



LOCATION

ZOI LOCATED IN THE HEART OF GLYFADA, ONE OF THE MOST PRESTIGIOUS AND VIBRANT AREAS OF THE ATHENS RIVIERA, THIS PROJECT OFFERS A UNIQUE BLEND OF ELEGANCE, LIFESTYLE, AND PRIME CONNECTIVITY KNOWN FOR ITS UPSCALE ATMOSPHERE, BEAUTIFUL COASTAL VIEWS, HIGH-END SHOPPING AND LIVELY DINING SCENE.



CONNECTIVITY & TRANSPORT

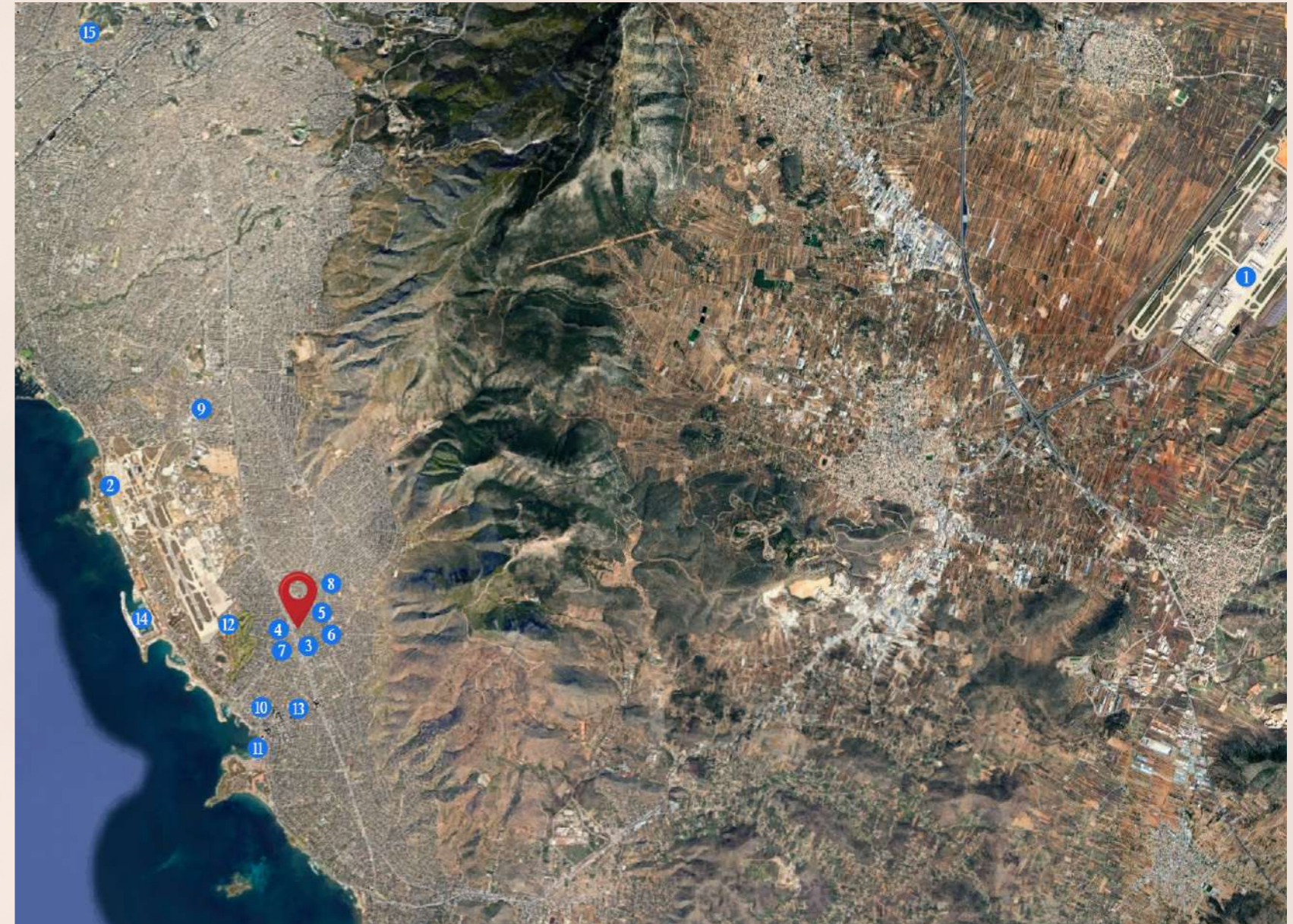
- 1- ATHENS INTERNATIONAL AIRPORT – 20 KM
- 2- ELLINIKO METRO STATION – 2 KM
- 3- BUS STOPS (ANDREA PAPANDREOU ST.) – 100 M

ESSENTIALS

- 4- MY MARKET – 400 M
- 5- RITIKOS SUPERMARKET – 600 M
- 6- PHARMACY – 300-500 M
- 7- GAS STATION (BP) – 300 M
- 8- CLINICS / MEDICAL CENTERS – 1-2 KM
- 9- IMS INTERNATIONAL SCHOOL – 4-5 KM

LEISURE & ENTERTAINMENT

- 10- OPEN AIR CINEMA (GLYFADA AREA) 2-3 KM
- 11- ASTERAS BEACH – 3 KM
- 12- GLYFADA GOLF CLUB ATHENS – 3 KM
- 13- GLYFADA SHOPPING CENTER – 2 KM
- 14- MARINA AGIOS KOSMAS – 2.5 KM
- 15- ACROPOLIS OF ATHENS – 10 KM





CLOSES TO

9 MINS → THE BEACH

18 MINS → ATHENS CITY CENTER

26 MINS → ATHENS AIRPORT

GLYFADA STANDS AS A TOP DESTINATION FOR BOTH LIVING AND INVESTMENT. THE PROJECT ENJOYS A STRATEGIC LOCATION WITH EASY ACCESS TO THE BEACH, MARINAS, INTERNATIONAL SCHOOLS, AND CENTRAL ATHENS, WHILE BEING SURROUNDED BY GREEN SPACES AND PREMIUM AMENITIES. ITS POSITION ENSURES A PERFECT BALANCE BETWEEN SEASIDE TRANQUILITY AND URBAN CONVENIENCE, MAKING IT AN EXCEPTIONAL CHOICE FOR THOSE SEEKING A REFINED MEDITERRANEAN LIFESTYLE IN ONE OF GREECE'S MOST PRIVILEGED NEIGHBORHOODS





ZOI
GLYFADA

MORE THAN A HOME A GATEWAY TO EUROPE

HERE, COMFORT MEETS ELEGANCE, AND EVERY DETAIL IS DESIGNED TO ENHANCE DAILY LIFE WHILE OPENING DOORS TO GREATER OPPORTUNITIES, FROM THE SERENITY OF THE AEGEAN COAST TO THE RICHNESS OF ATHENS' HISTORIC HEART. MORE THAN WALLS AND WINDOWS, ZOI OFFERS A SENSE OF PLACE, A SENSE OF PURPOSE, AND A PROMISE OF LIFE REDEFINE





ZOI
GLYFADA

OUR RESIDENTIAL BUILDING



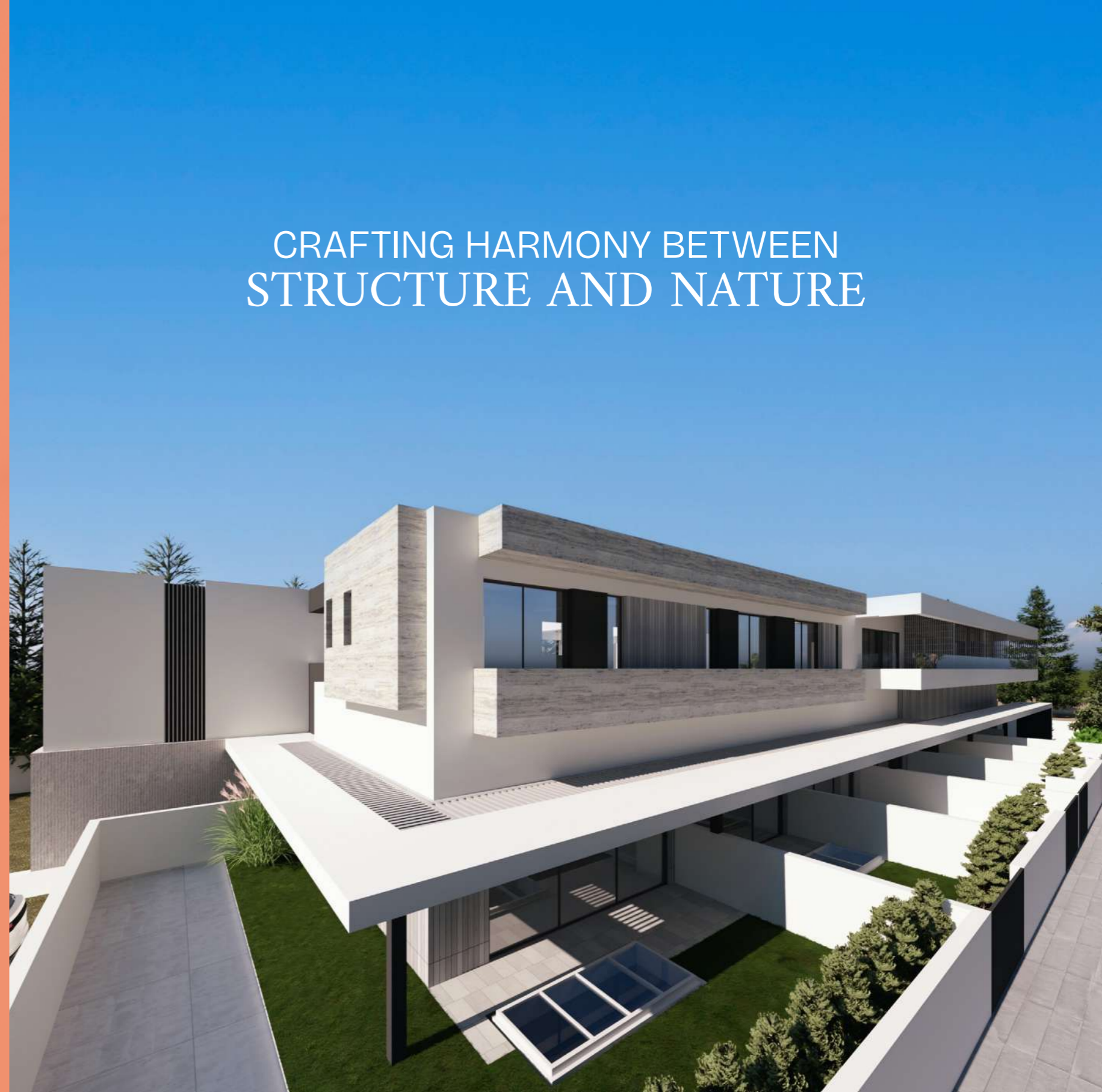
OUR RESIDENTIAL BUILDINGS ARE DESIGNED WITH A GROUND LEVEL AND THREE ADDITIONAL FLOORS, THOUGHTFULLY PLANNED TO OFFER A RANGE OF LIVING OPTIONS WITHIN THESE SPACES, RESIDENTS CAN CHOOSE FROM A SELECTION OF FULLY FINISHED STUDIO , ONE BEDROOM APARTEMENT AND LOFTS, EACH CRAFTED TO COMBINE COMFORT, FUNCTIONALITY, AND MODERN DESIGN. EVERY HOME REFLECTS A BALANCE OF STYLE AND PRACTICALITY, ENSURING THAT RESIDENTS ENJOY A LIVING EXPERIENCE THAT IS BOTH ELEGANT AND EFFORTLESS

SERVICED APARTMENT

DAILY LIFE, ELEVATED. OUR PROFESSIONAL HOUSEKEEPING SERVICE ENSURES YOUR APARTMENT REMAINS IMPECCABLY MAINTAINED, OFFERING HOTEL-LEVEL CARE WITHIN THE COMFORT OF YOUR OWN HOME. WHETHER FOR PERSONAL STAYS OR RENTAL GUESTS, IT GUARANTEES CONSISTENT QUALITY, EFFORTLESS LIVING, AND ENHANCED PROPERTY VALUE

ZOI
GLYFADA

CRAFTING HARMONY BETWEEN STRUCTURE AND NATURE





AN INVITATION TO BELONG IN GLYFADA

BLENDING SOPHISTICATION WITH A SENSE OF BELONGING. THIS IS NOT JUST ARCHITECTURE;
IT IS A STATEMENT OF REFINED LIVING, CRAFTED FOR THOSE WHO VALUE BOTH
MODERNITY AND HERITAGE.

THREE PILLARS, ONE JOURNEY

AT THE CENTER, A REFINED LATTICE DETAIL STANDS AS A DESIGN SIGNATUR BALANCING PRIVACY
WITH BEAUTY AND ADDING A TOUCH OF ARCHITECTURAL ARTISTRY THE RESIDENCE IS GRACEFULLY
GROUNDED BY LANDSCAPED GREENERY AND SUBTLE BRICKWORK



FACILITIES



A POOLSIDE RETREAT AT HOME

THE POOL FACILITIES AT ZOI OFFER A RETREAT OF RELAXATION AND LEISURE, DESIGNED AS AN EXTENSION OF THE REFINED LIFESTYLE WITHIN THE RESIDENCE. SURROUNDED BY ELEGANT ARCHITECTURE AND LANDSCAPED GREENERY

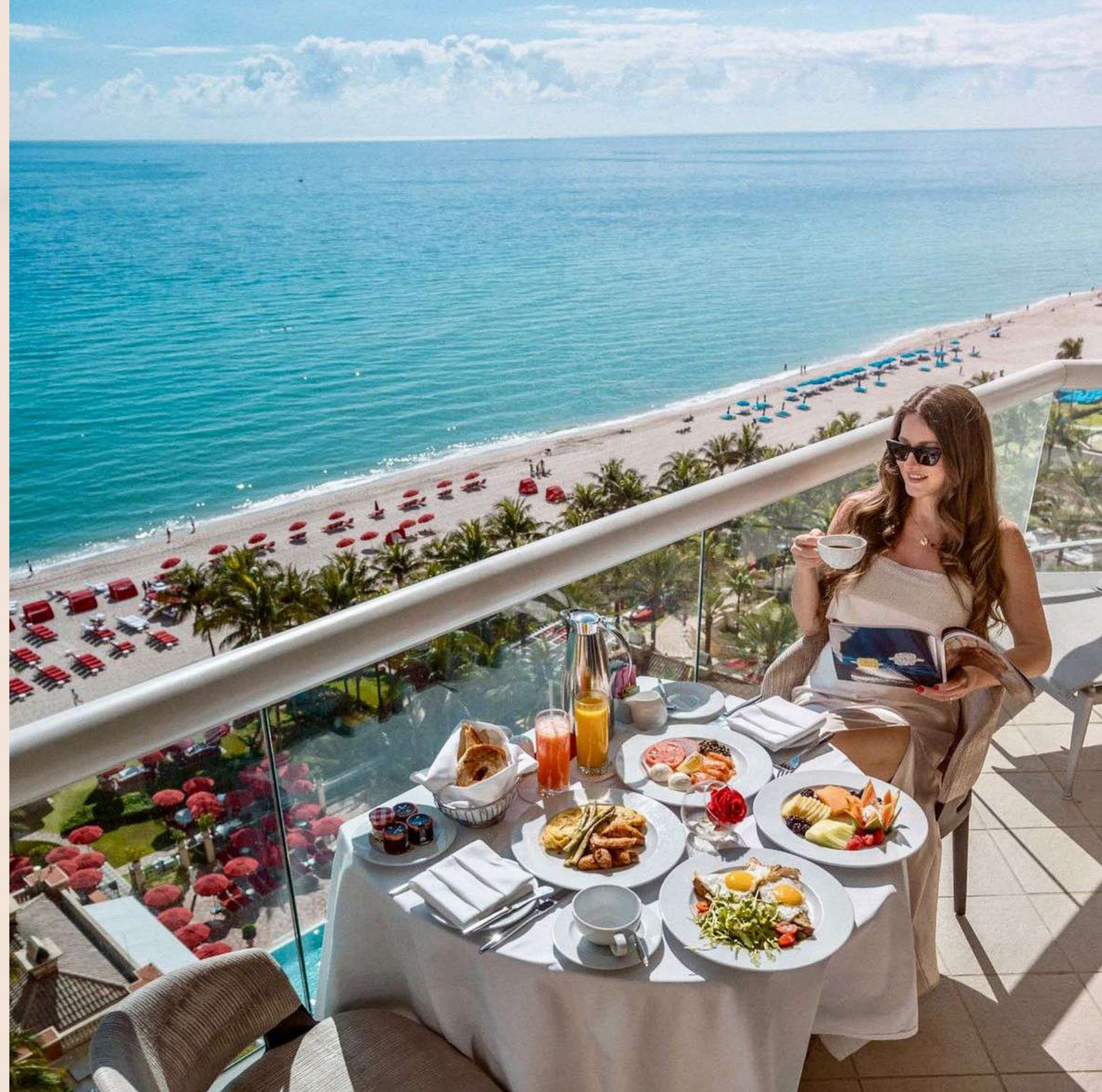
THE POOL CREATES A SERENE ENVIRONMENT WHERE RESIDENTS CAN UNWINDRE-CHARGE, OR SOCIALIZE. WHETHER STARTING THE DAY WITH A REFRESHING SWIM OR SPENDING THE AFTERNOON BY THE WATER.

THE POOL EMBODIES THE PERFECT BALANCE OF WELLNESS AND LUXURY, TURNING EVERY MOMENT INTO A RESORT-LIKE EXPERIENCE AT HOME



A CAFE AT THE HEART OF HOME

AT THE HEART OF THE RESIDENCE, THE CAFÉ OFFERS MORE THAN CONVENIENCE
IT IS A PLACE TO CONNECT, UNWIND, AND FEEL AT HOME. DESIGNED WITH MODERN ELEGANCE, IT
PROVIDES A WELCOMING ATMOSPHERE WHERE RESIDENTS CAN START THE DAY WITH A COFFEE,
MEET WITH NEIGHBORS, OR ENJOY A QUIET MOMENT OF REFLECTION





GYM WITHIN REACH

A FULLY EQUIPPED GYM THAT MAKES STAYING ACTIVE EASY AND
CONVENIENT FOR RESIDENTS

SUNSET TERRACE AND SOCIAL AREA

A VIBRANT SUNSET TERRACE AND SOCIAL AREA WHERE RESIDENTS CAN GATHER,
RELAX, AND ENJOY OPEN-AIR EXPERIENCES TOGETHER, ALL WHILE OVERLOOKING
STUNNING CITY VIEWS

ZOI
GLYFADA





PRIVATE WELLNESS AREA

A CALM SPACE DESIGNED FOR YOGA, STRETCHING, AND MOMENTS OF WELLNESS
WITHIN THE COMFORT OF YOUR BUILDING



SECURE PARKING AREA

SECURE PRIVATE PARKING THAT PROVIDES RESIDENTS WITH EVERYDAY
CONVENIENCE AND PEACE OF MIND

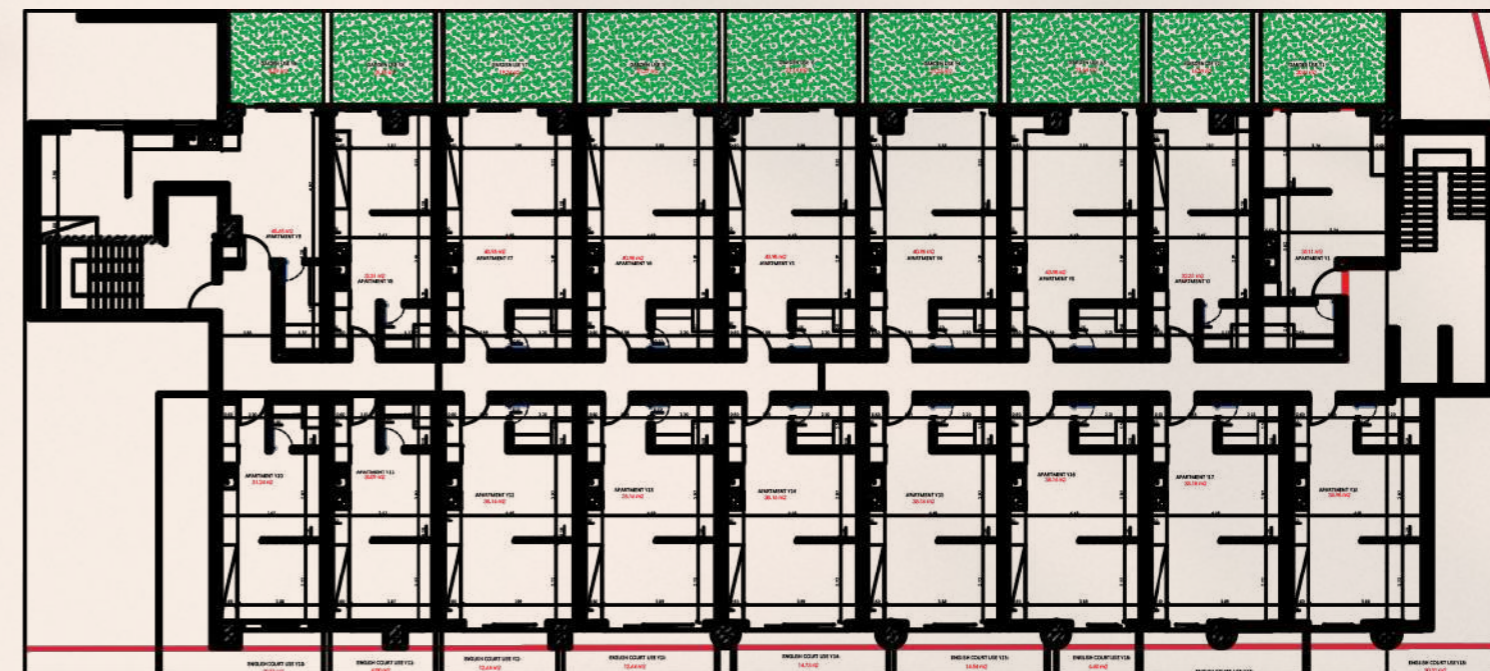




A TOUCH OF
ARCHITECTURAL ARTISTRY

ZOI
GLYFADA

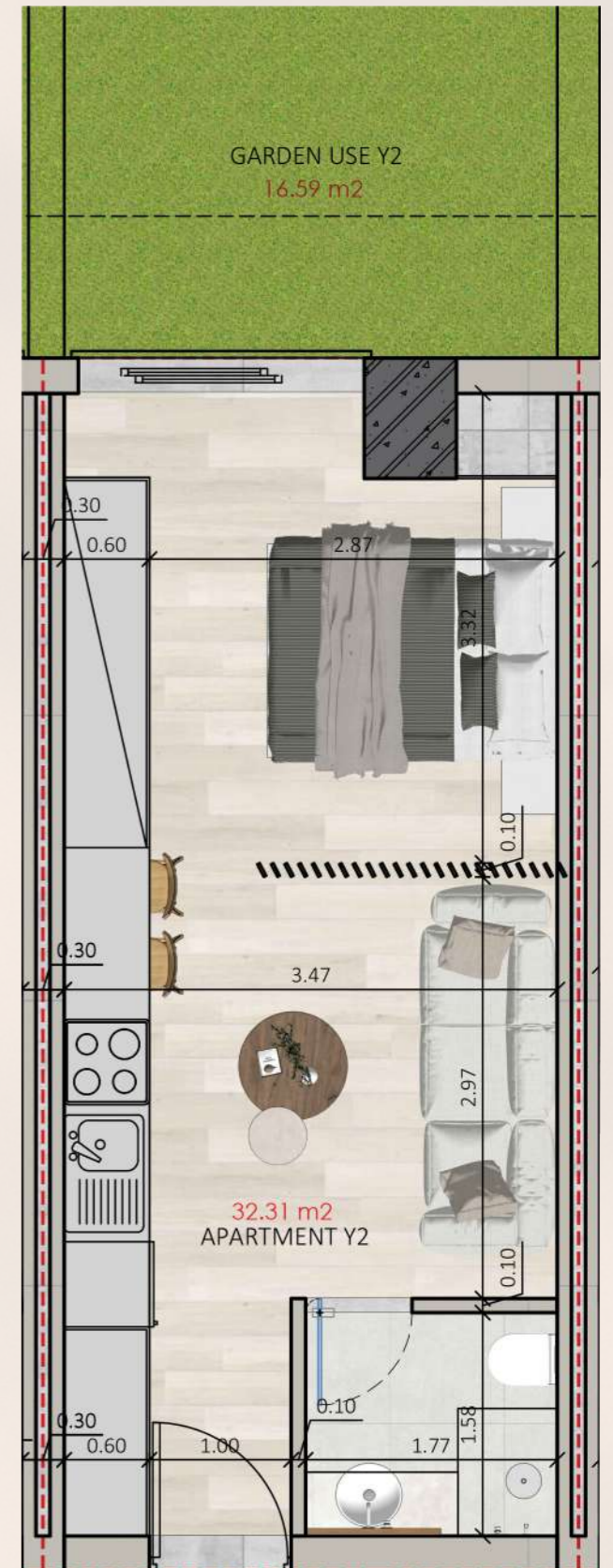
LOWER GROUND



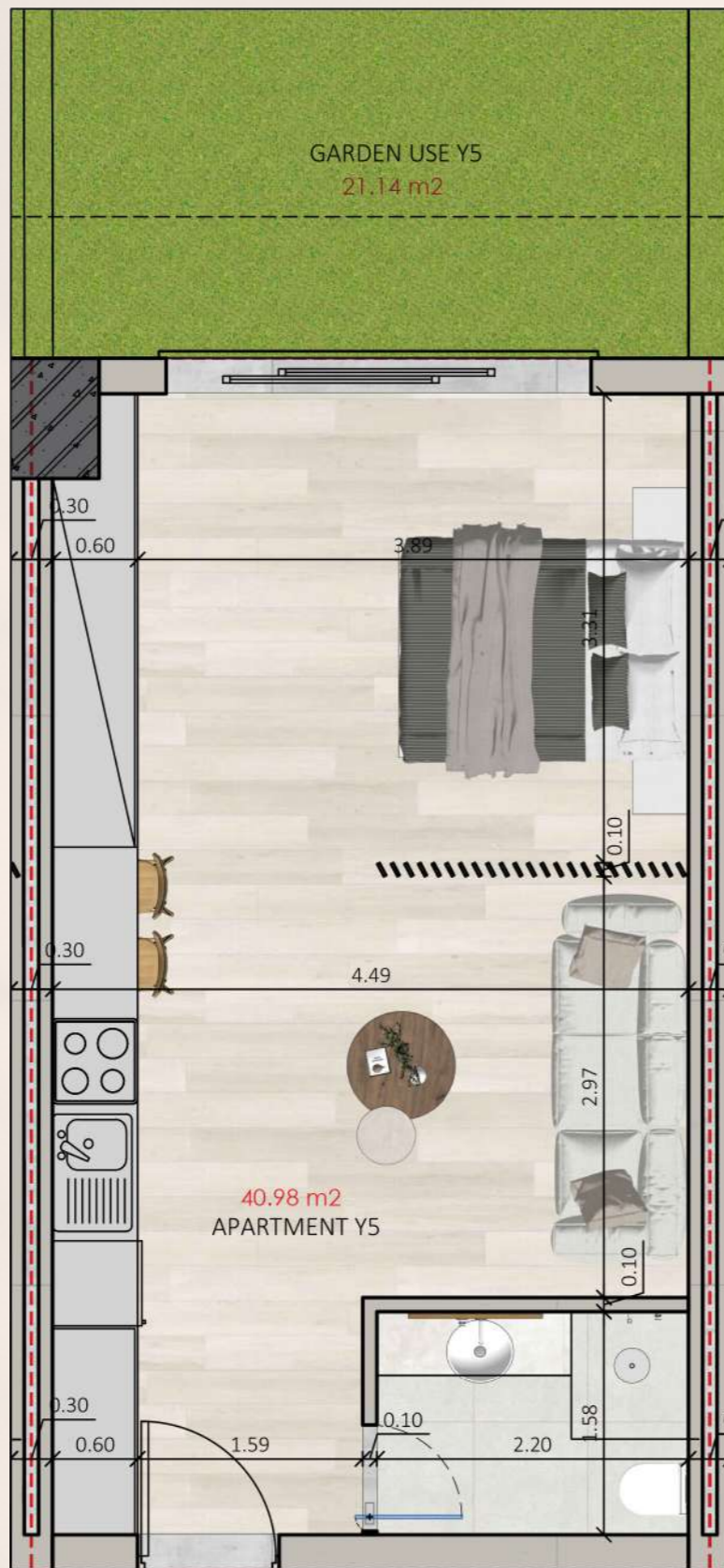
Y1 AREA = 35.11 M²



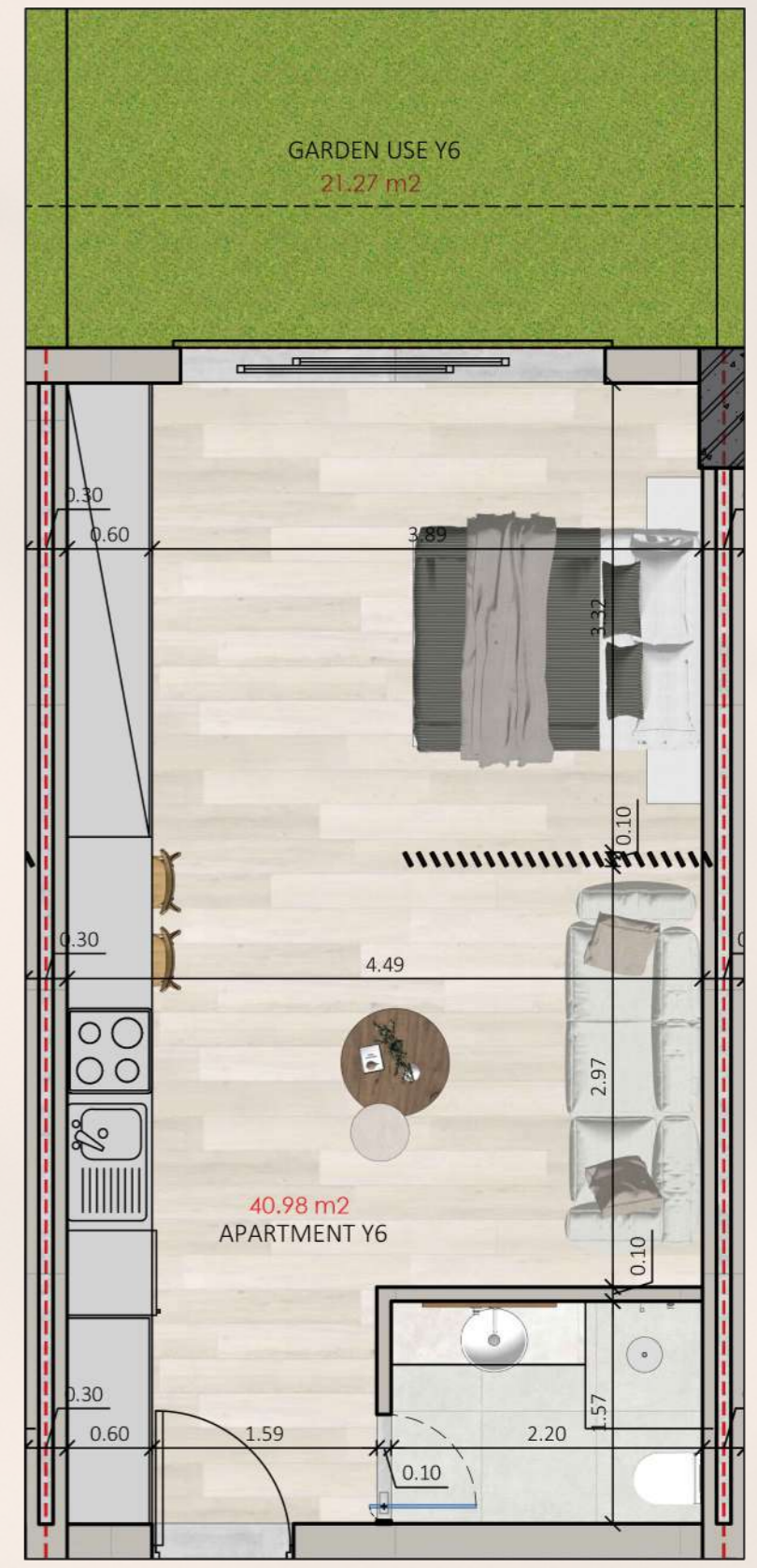
Y2 AREA = 32.31 M²



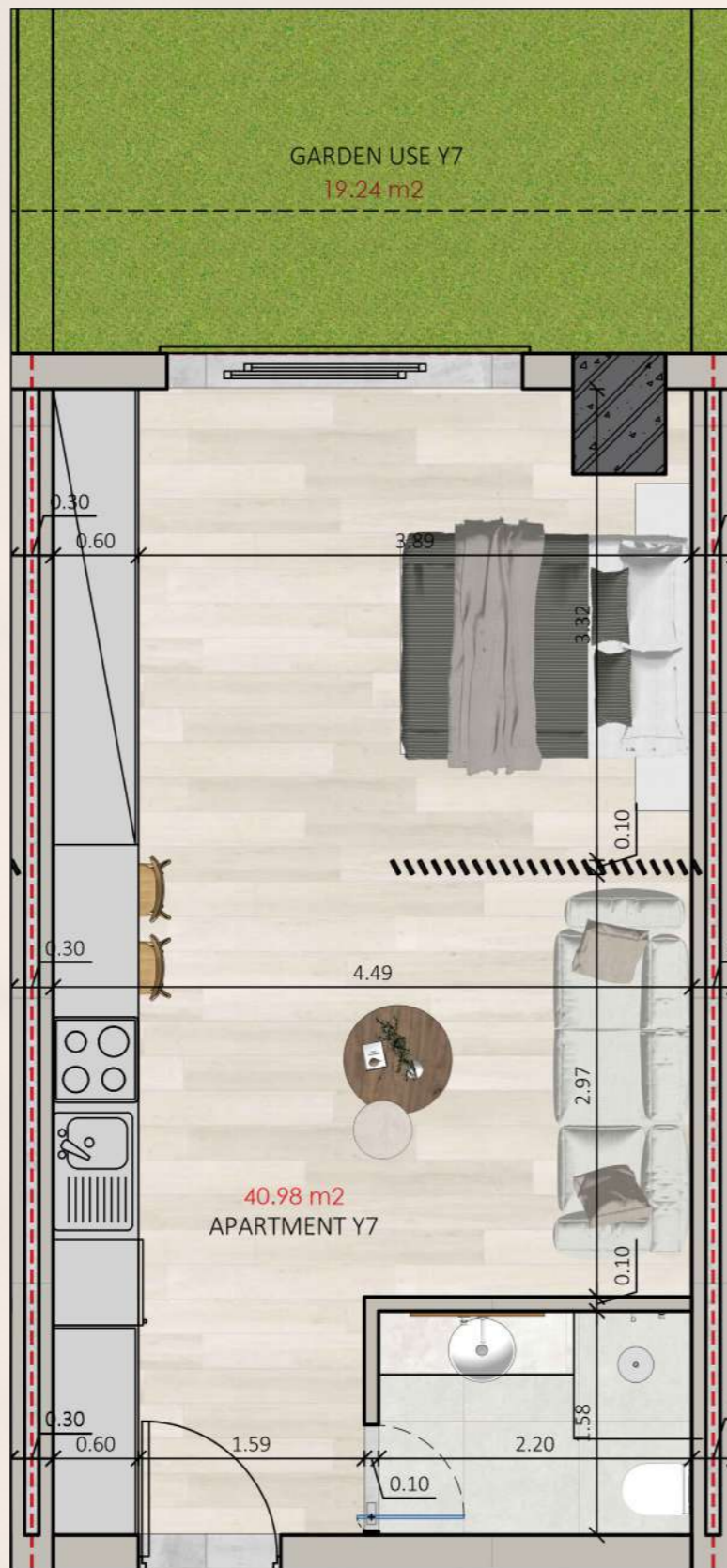
Y5 AREA = 40.98 M²



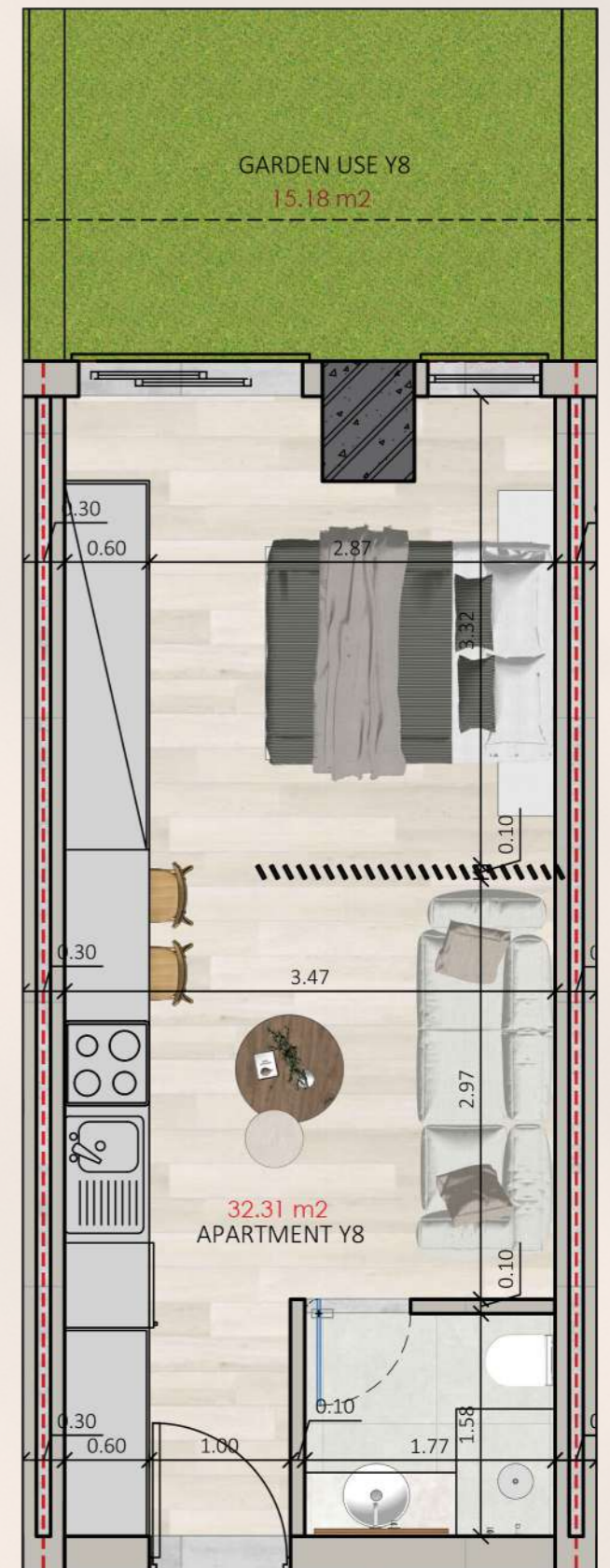
Y6 AREA = 40.98 M²



Y7 AREA = 40.98 M²



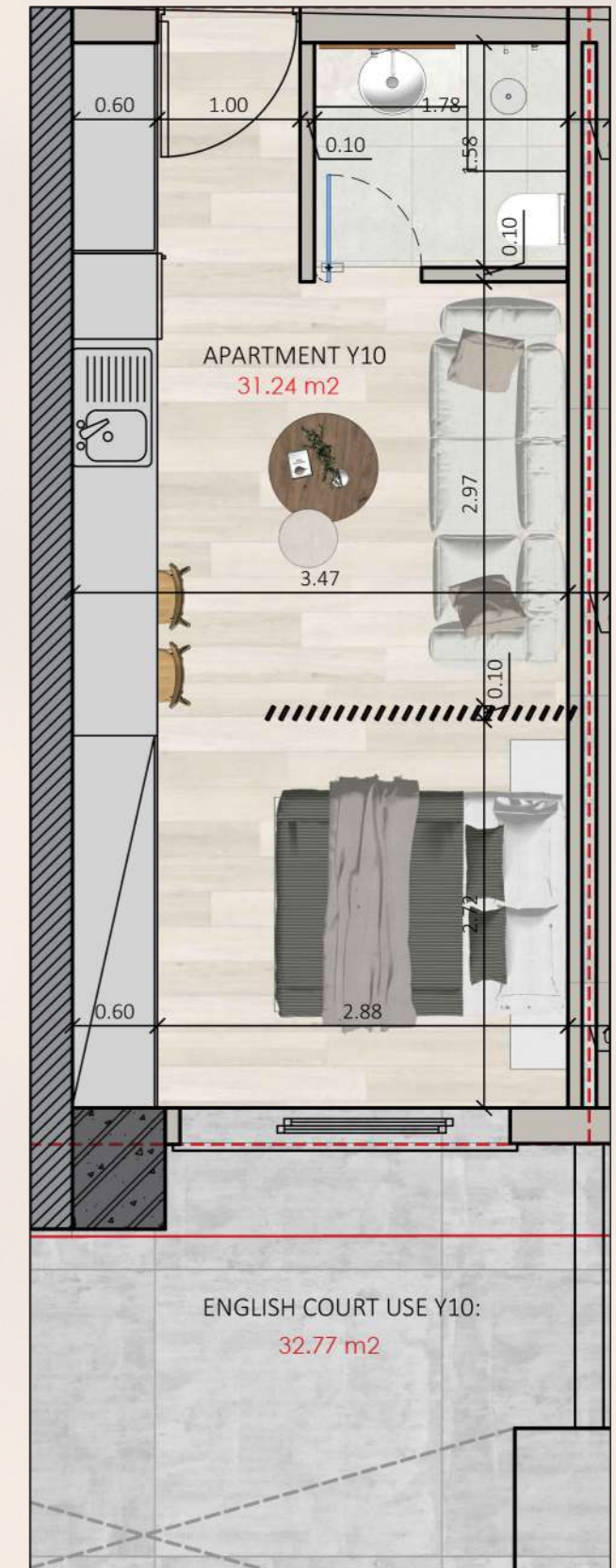
Y8 AREA = 32.31 M²



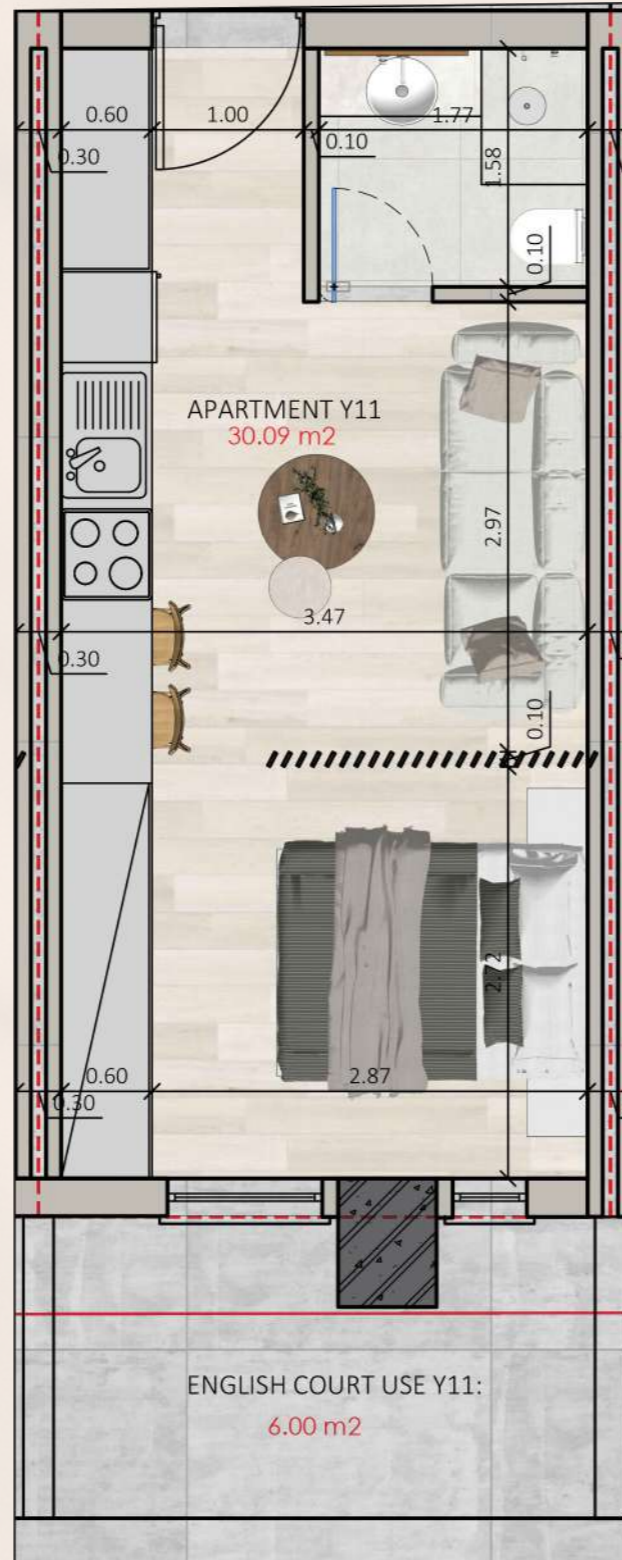


Y9 AREA = 45.65 M²

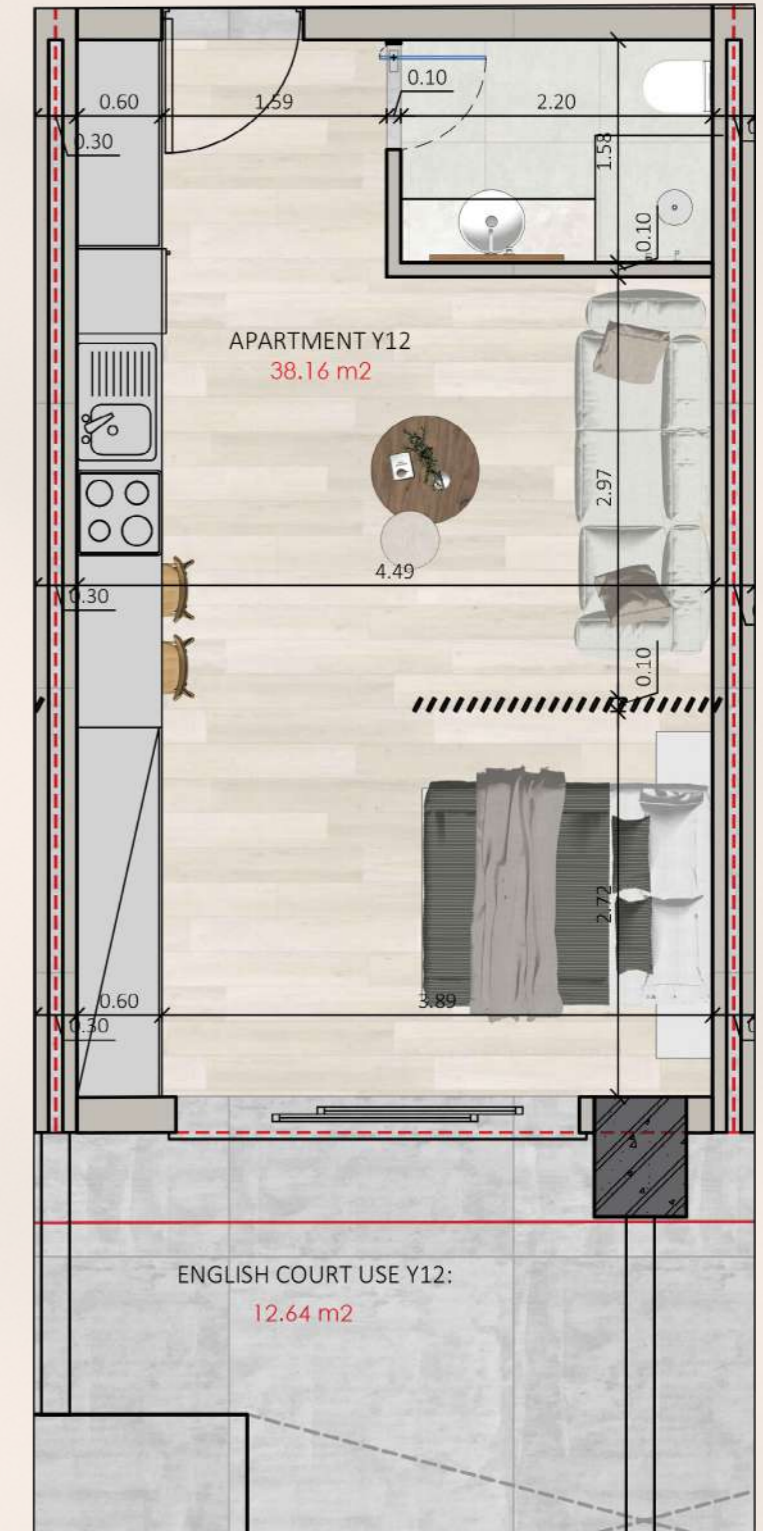
Y10 AREA = 31.24 M²



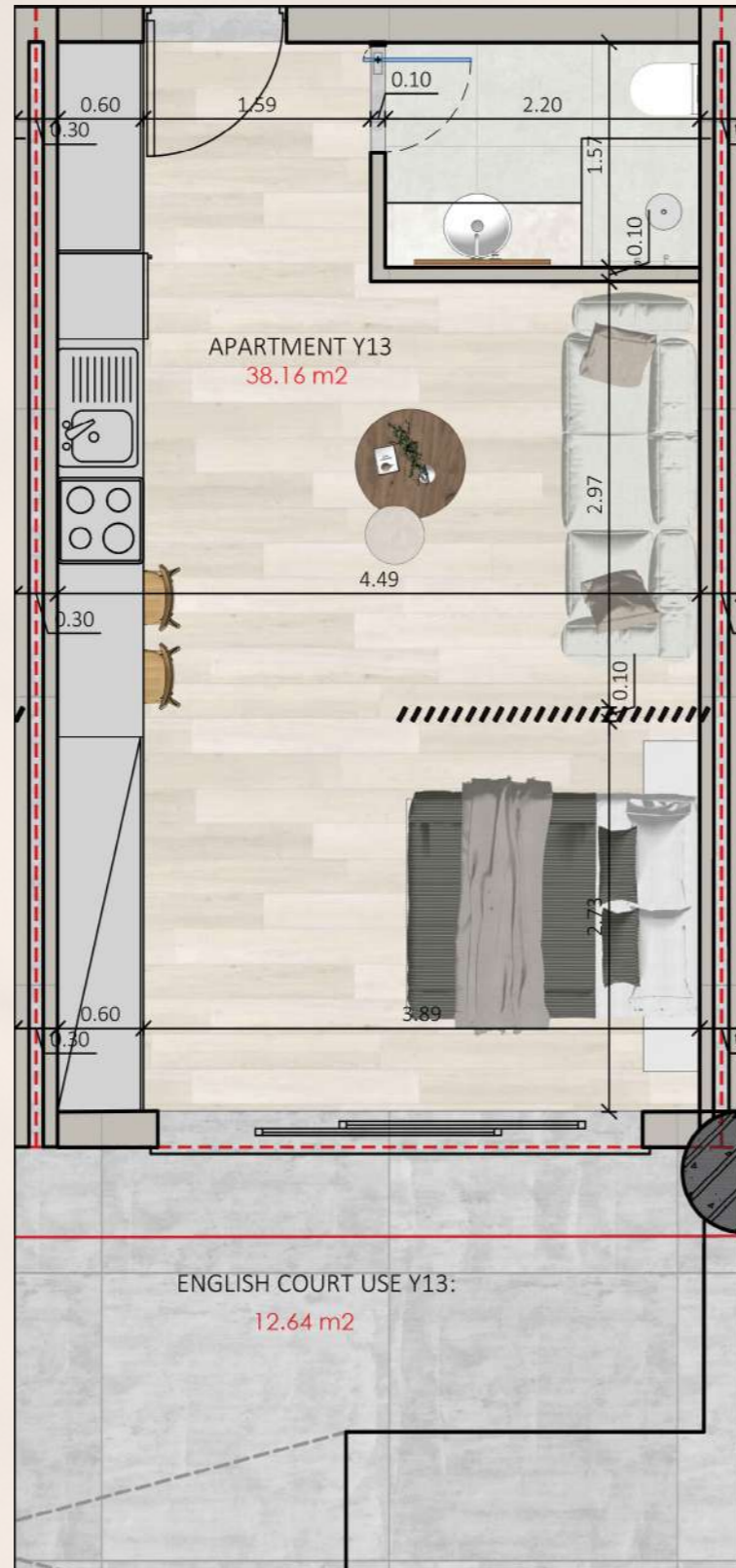
Y11 AREA = 30.09 M²



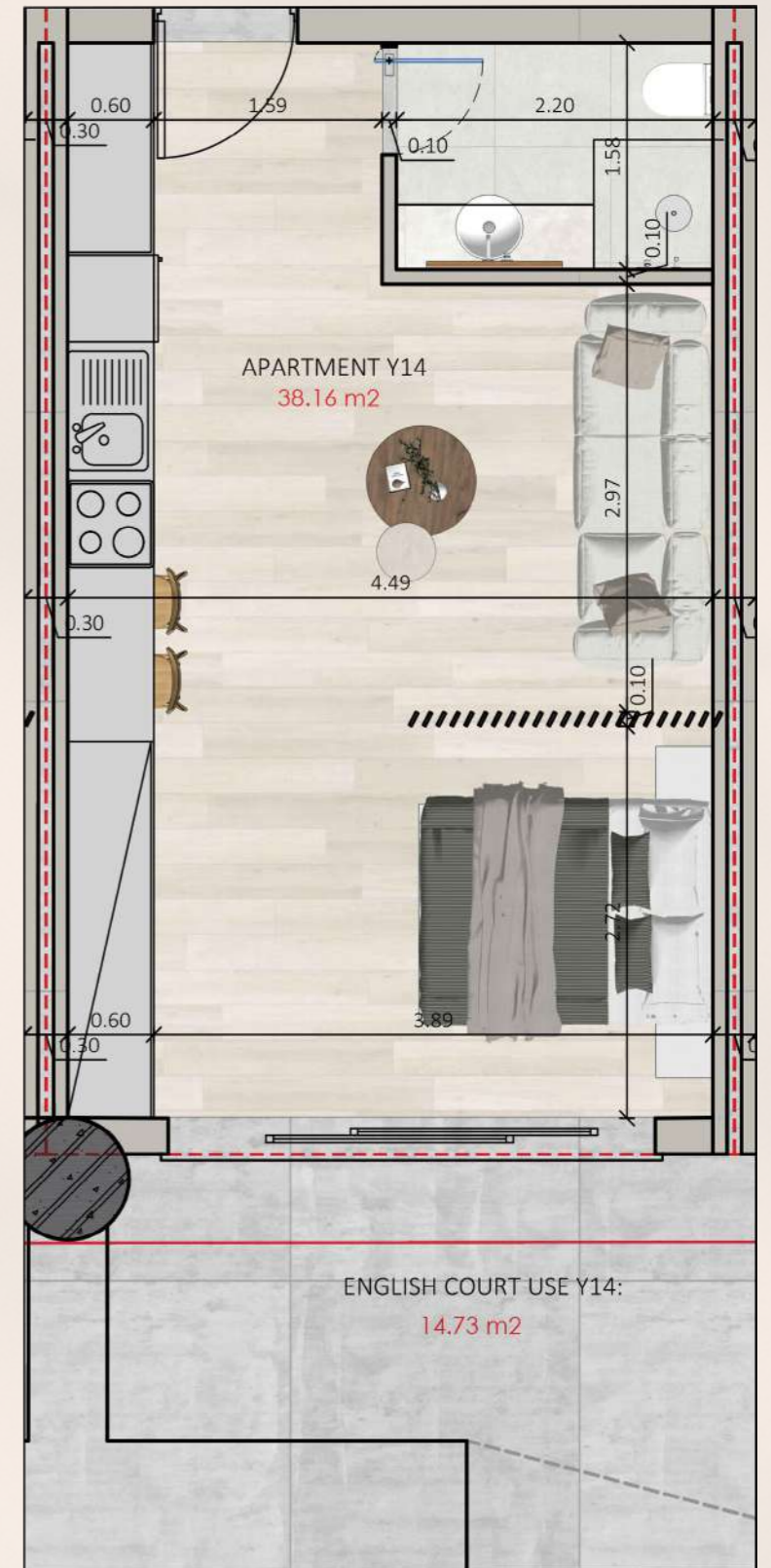
Y12 AREA = 38.16 M²



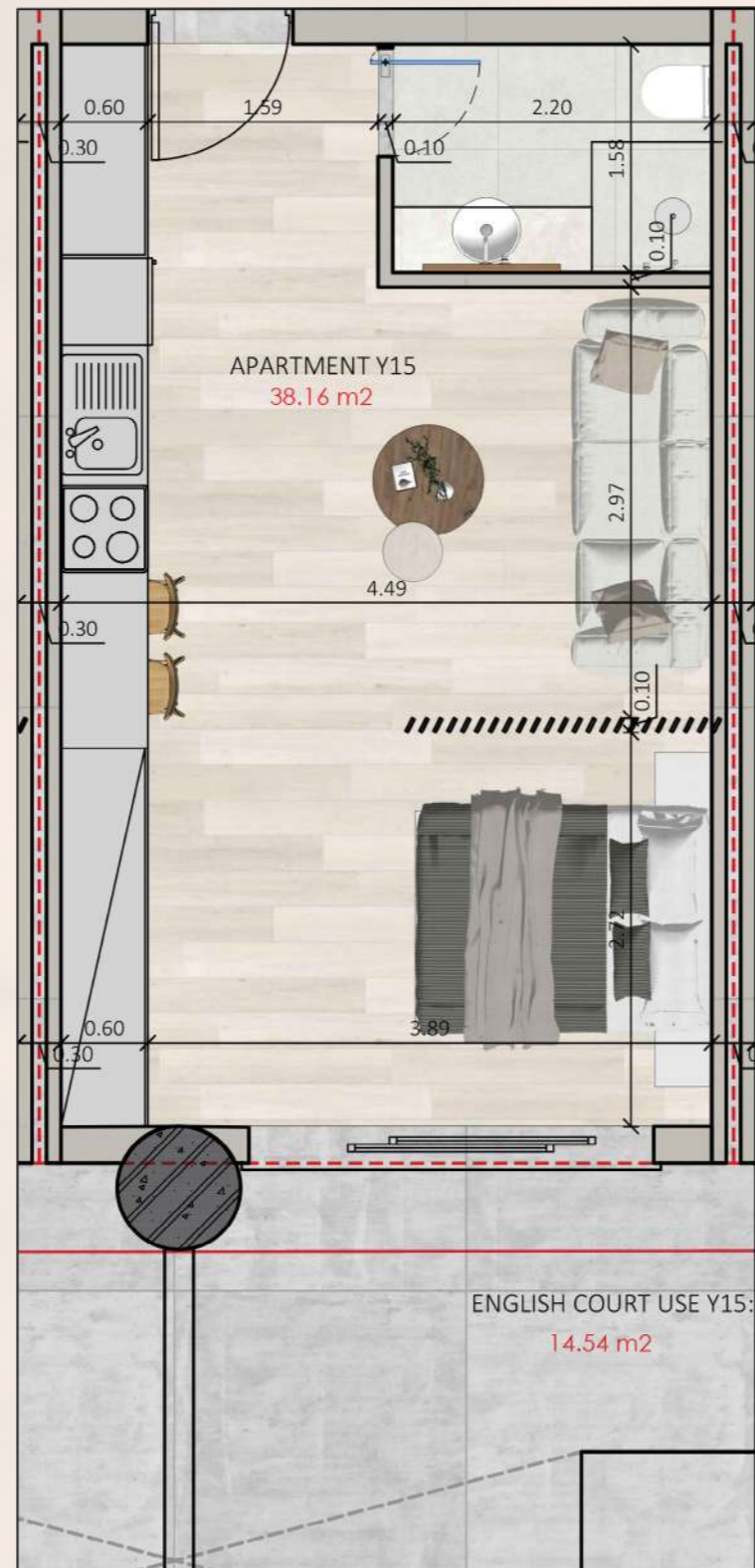
Y13 AREA = 38.16 M²



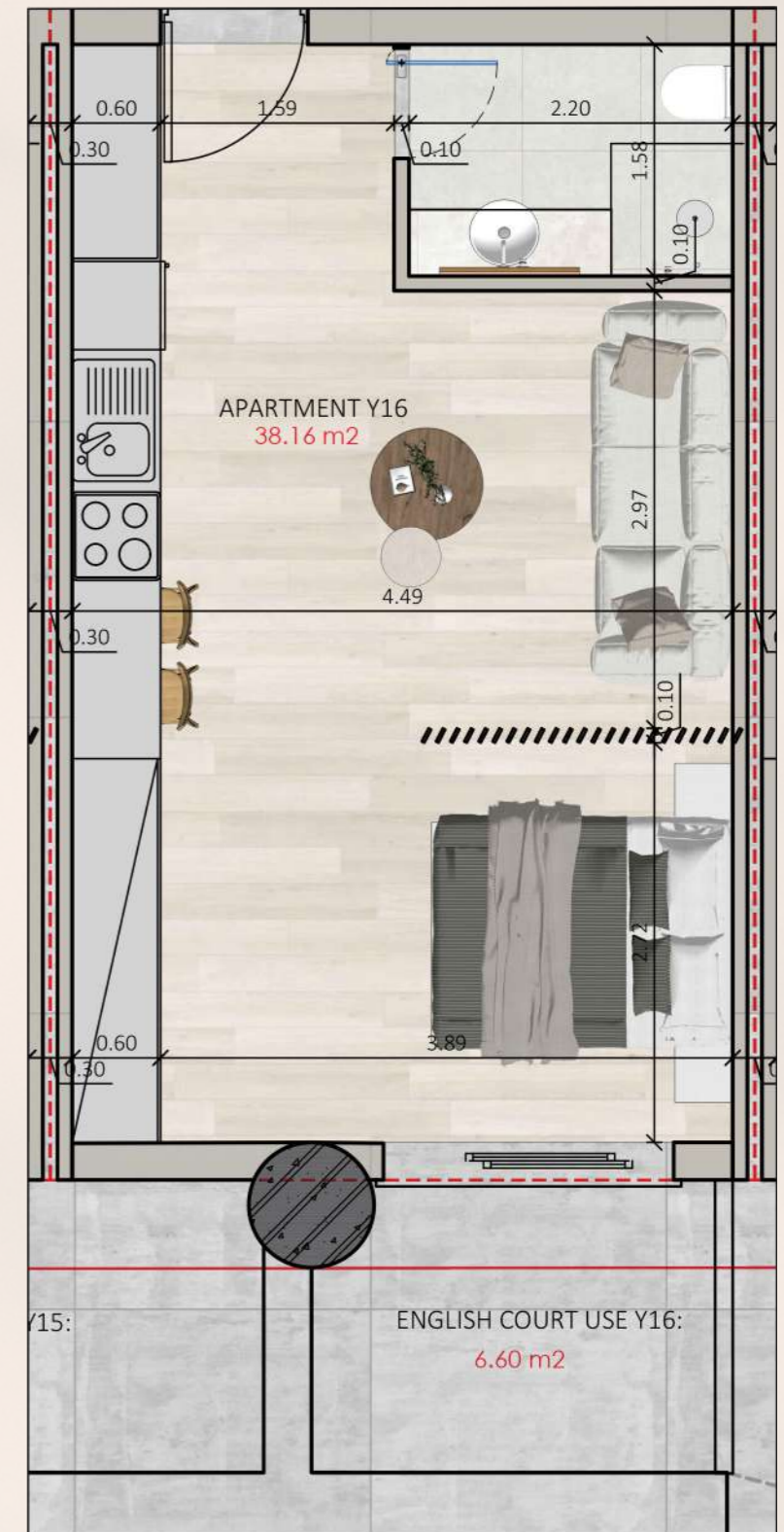
Y14 AREA = 38.16 M²



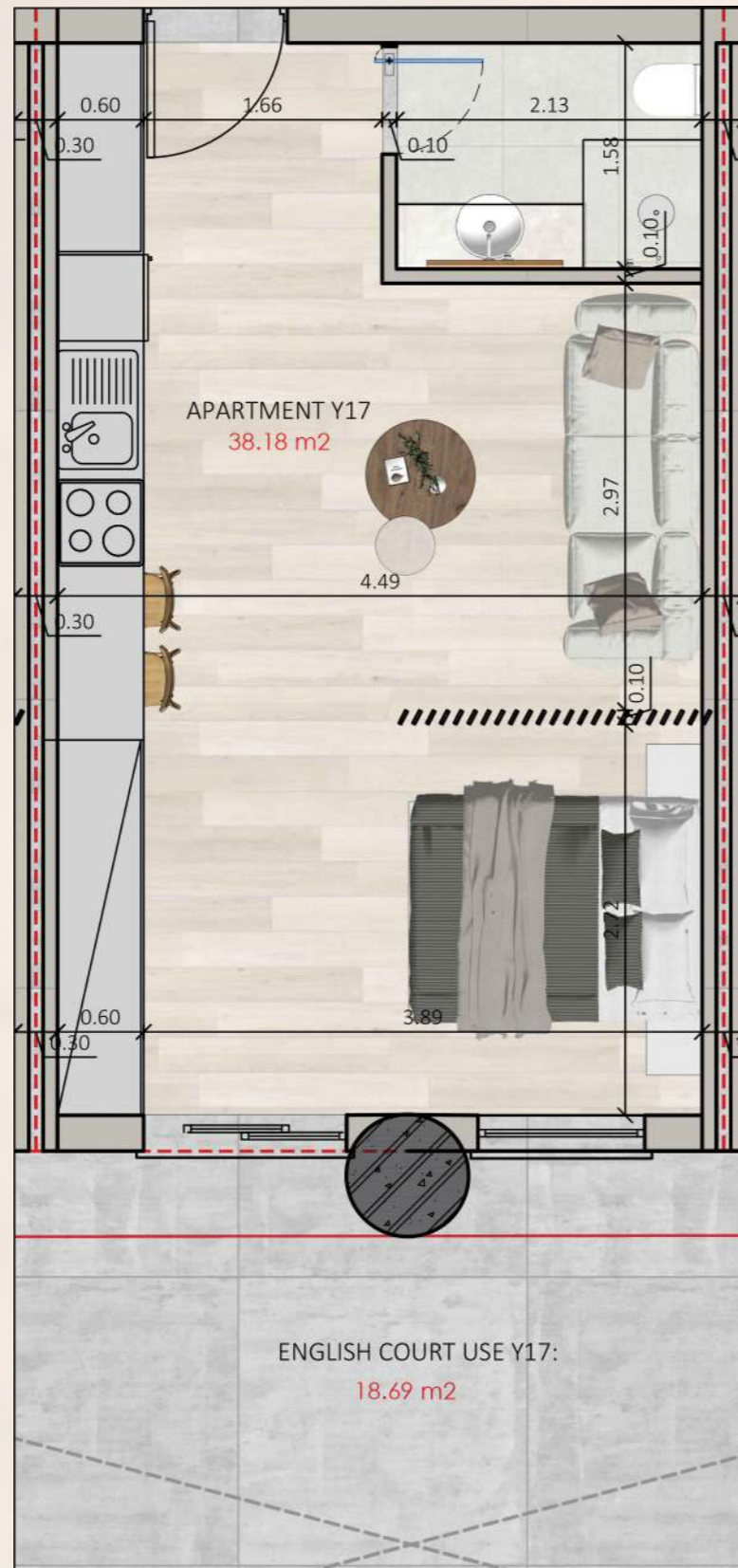
Y15 AREA = 38.16 M²



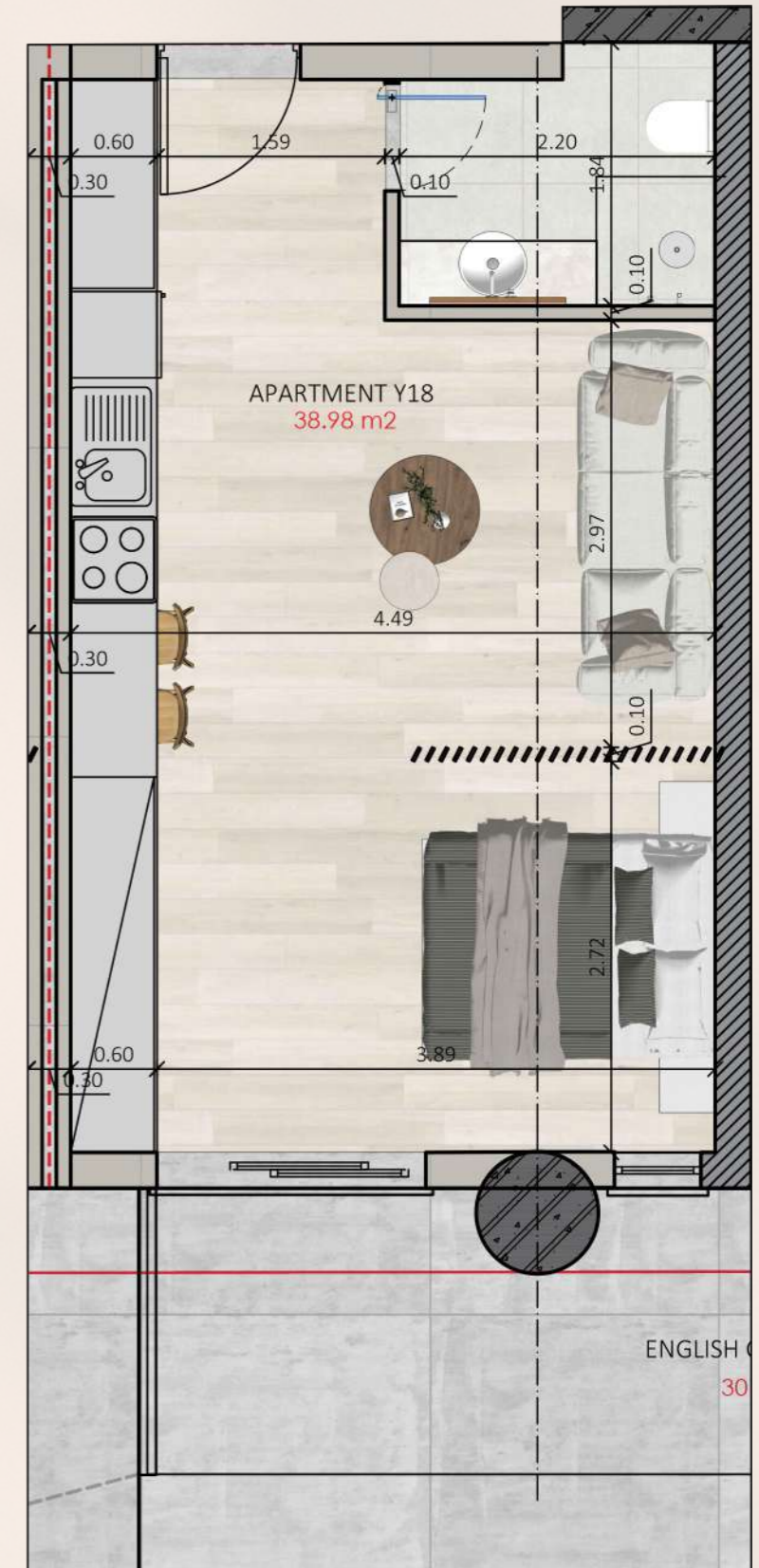
Y16 AREA = 38.16 M²



Y17 AREA = 38.18 M²



Y18 AREA = 38.98 M²

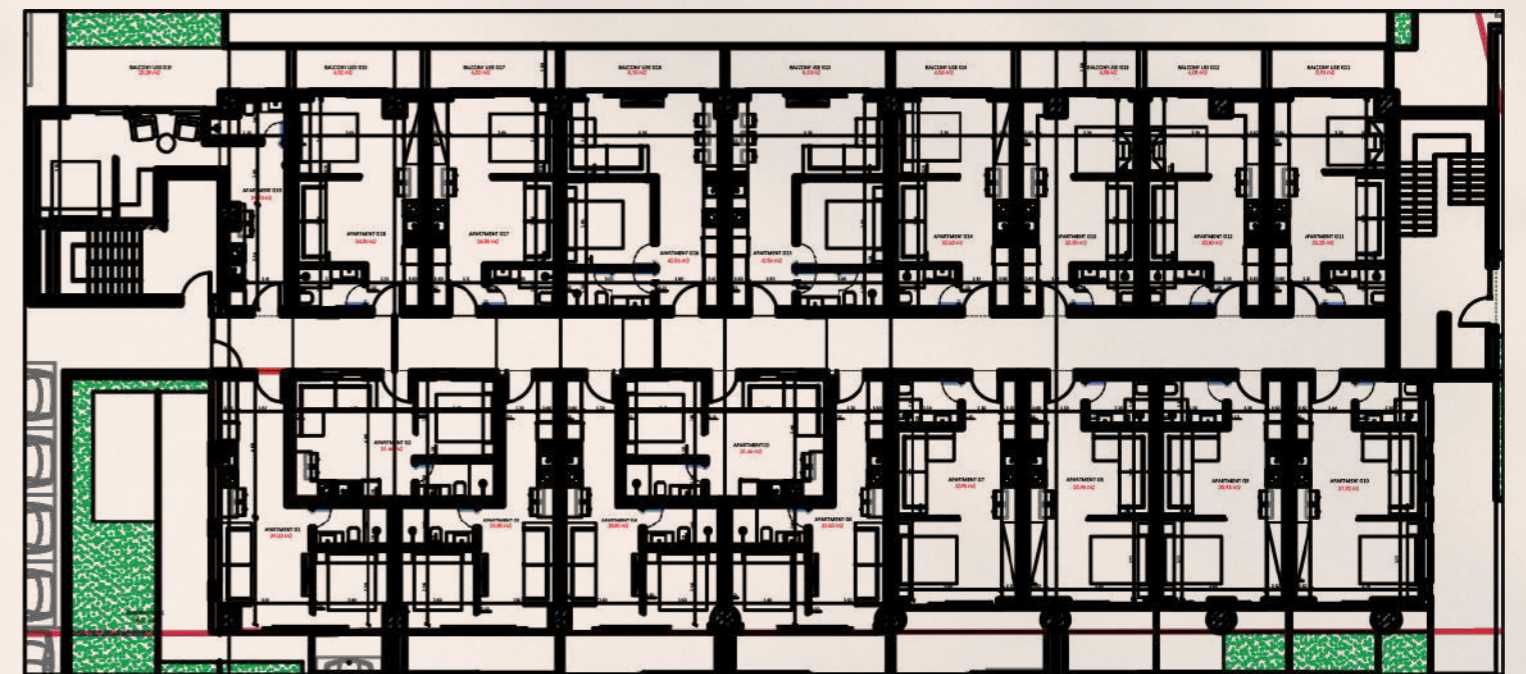








GROUND FLOOR



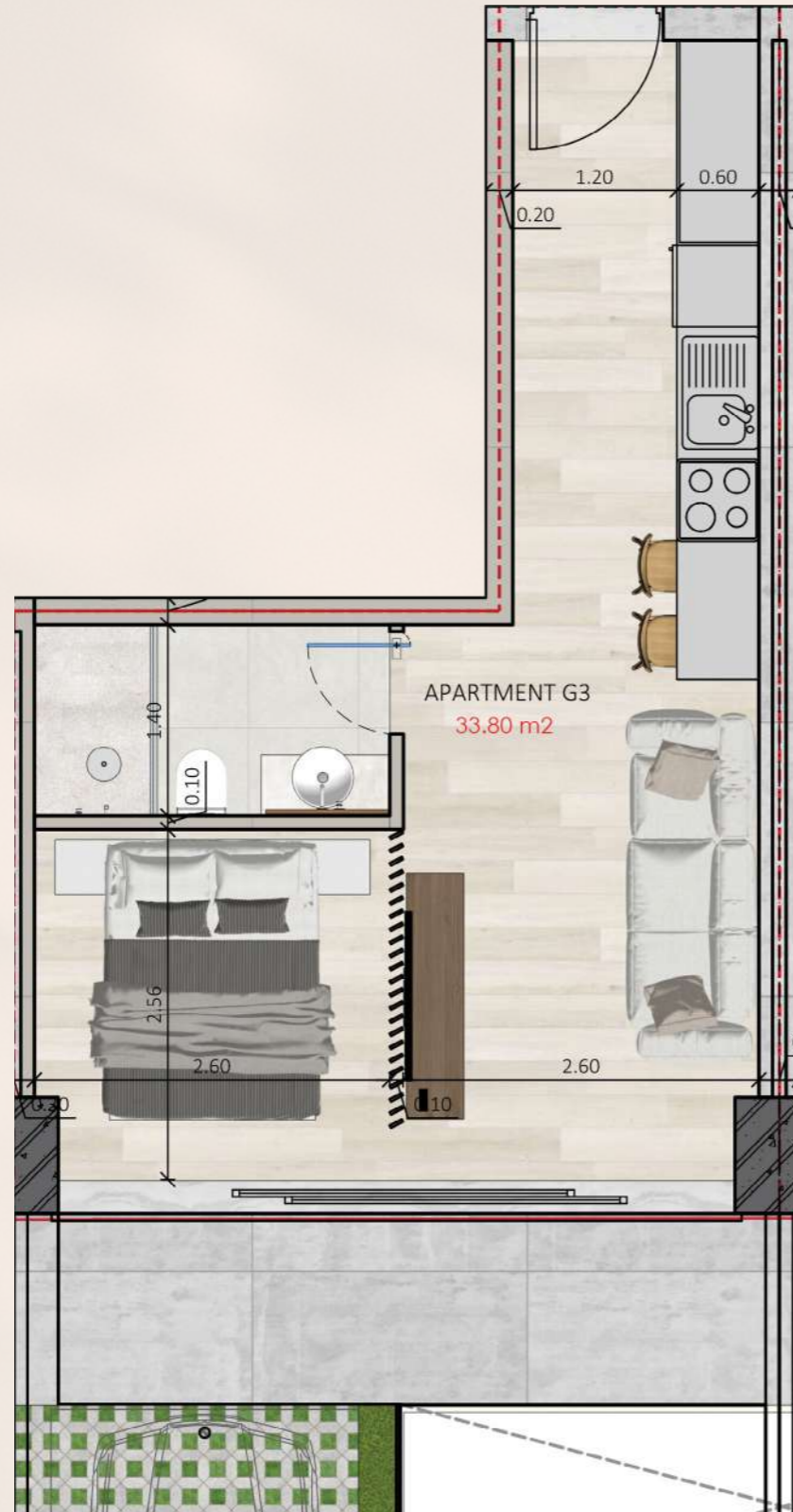
G1 AREA = 39.30 M²



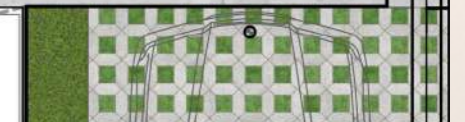
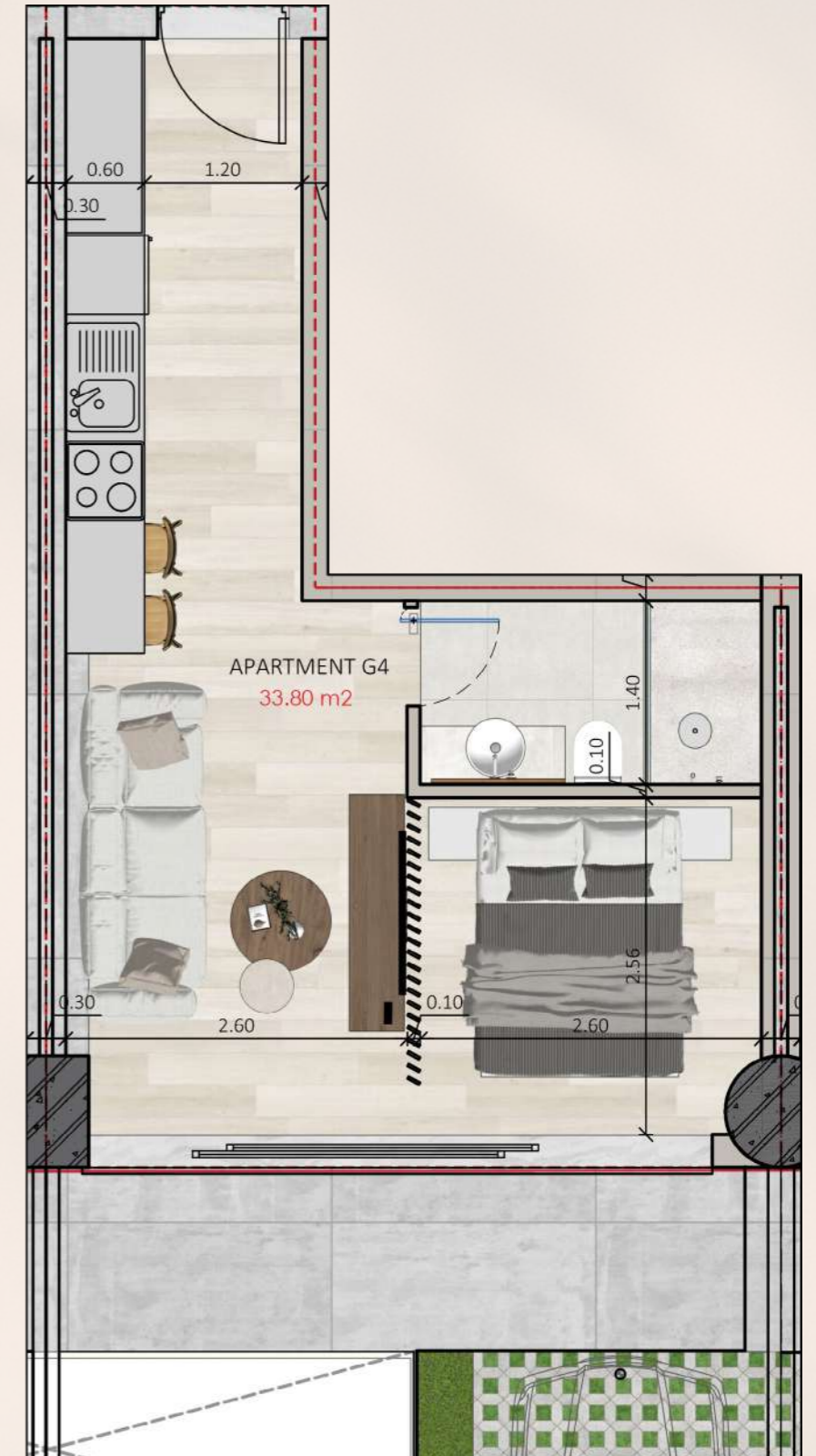
G2 AREA = 31.46 M²



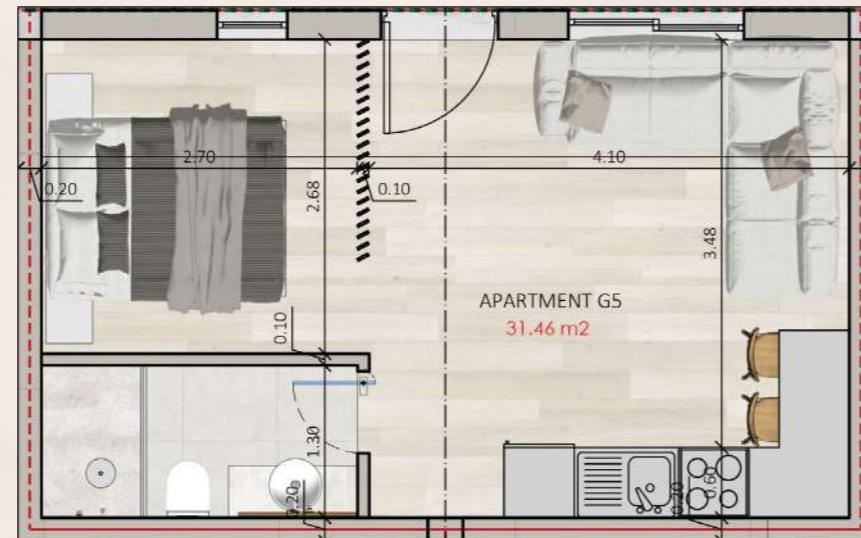
G3 AREA = 33.80 M²



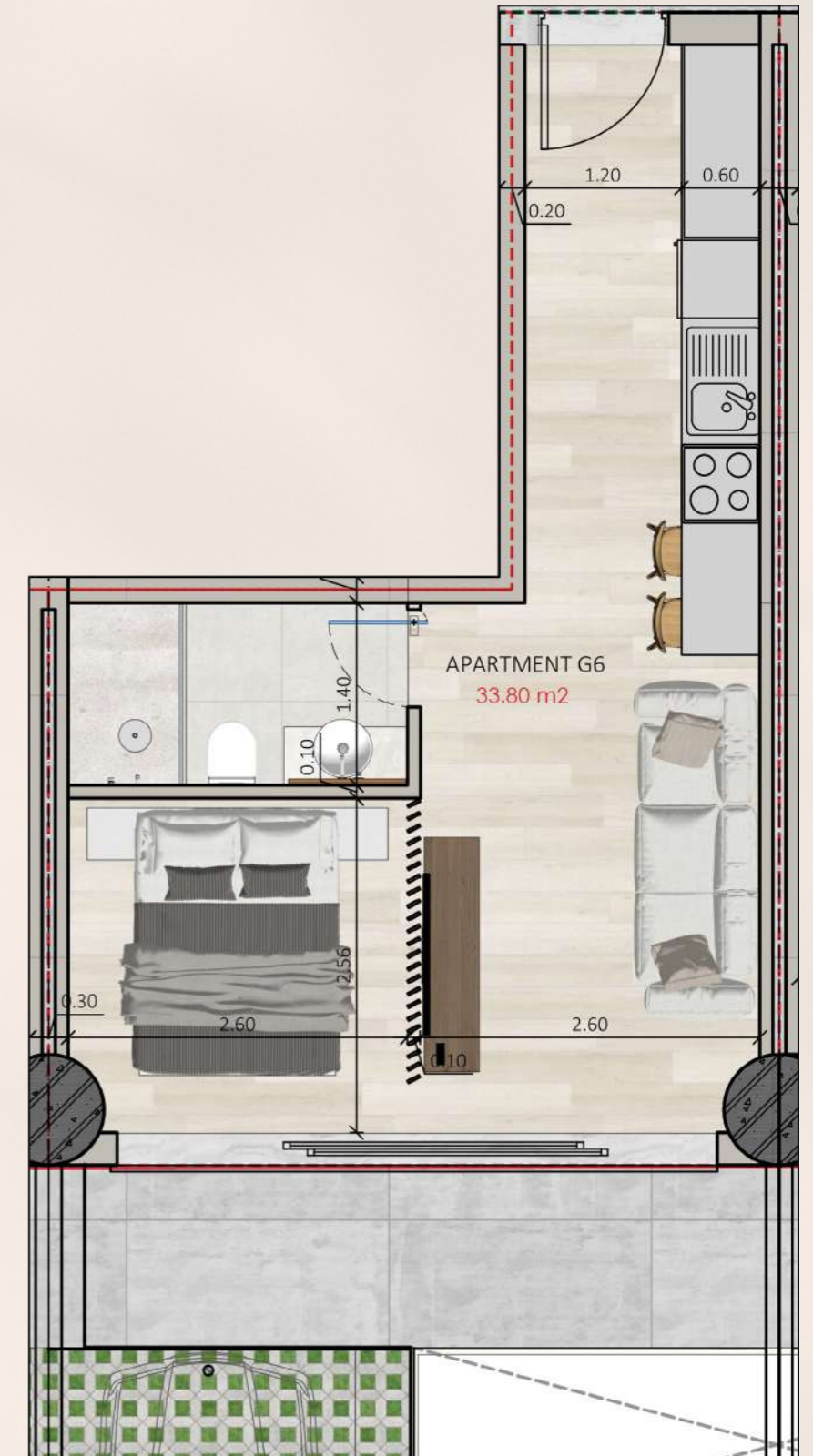
G4 AREA = 33.80 M²



G5 AREA = 31.46 M²



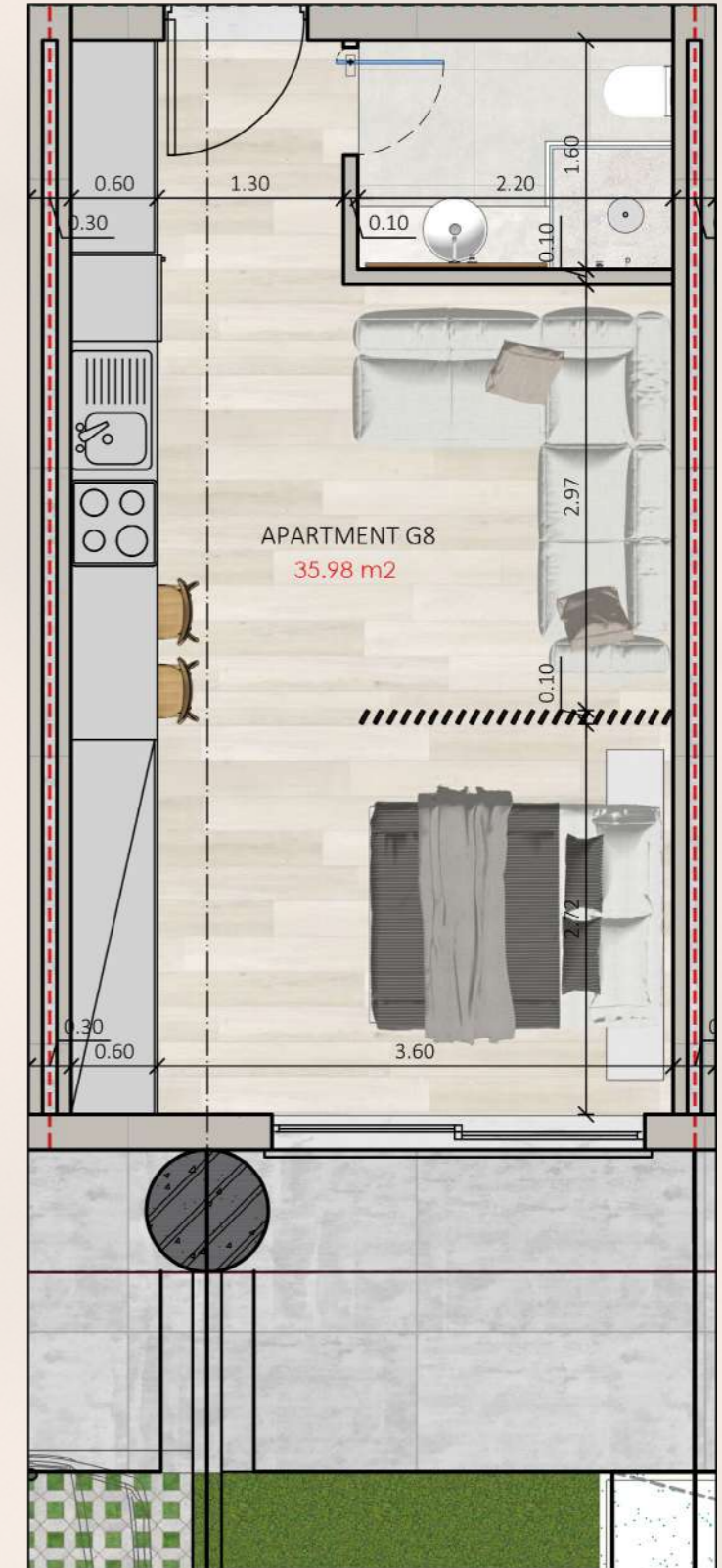
G6 AREA = 33.80 M²



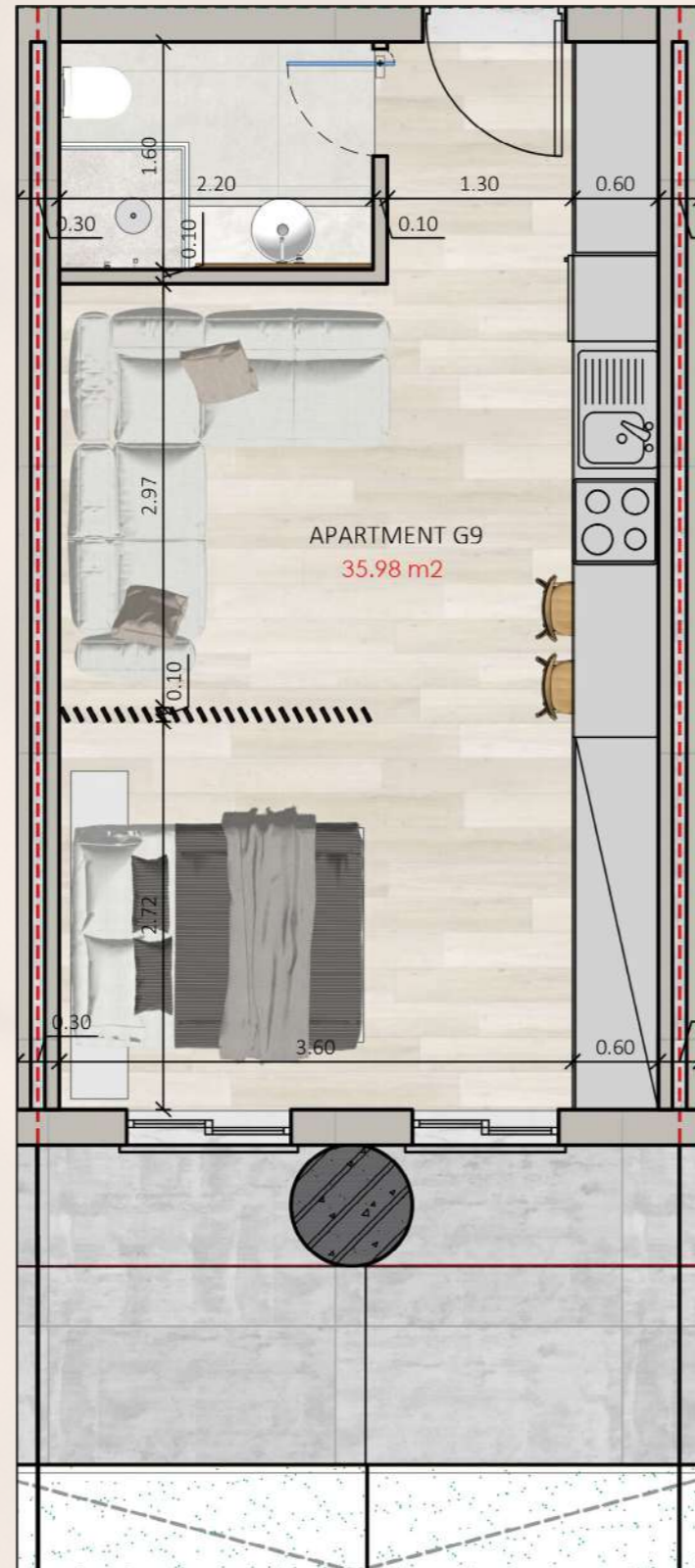
G7 AREA = 35.98 M²



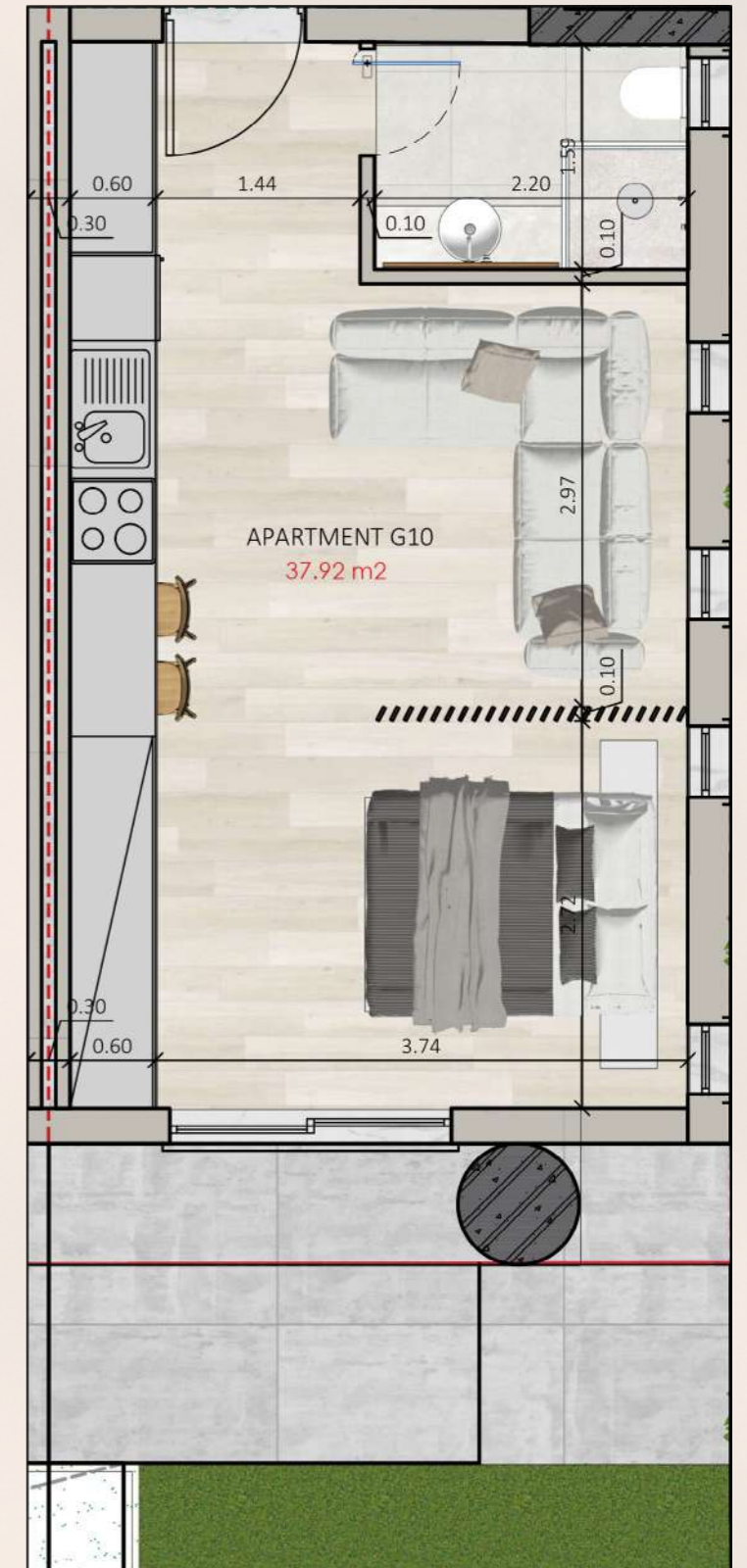
G8 AREA = 35.98 M²



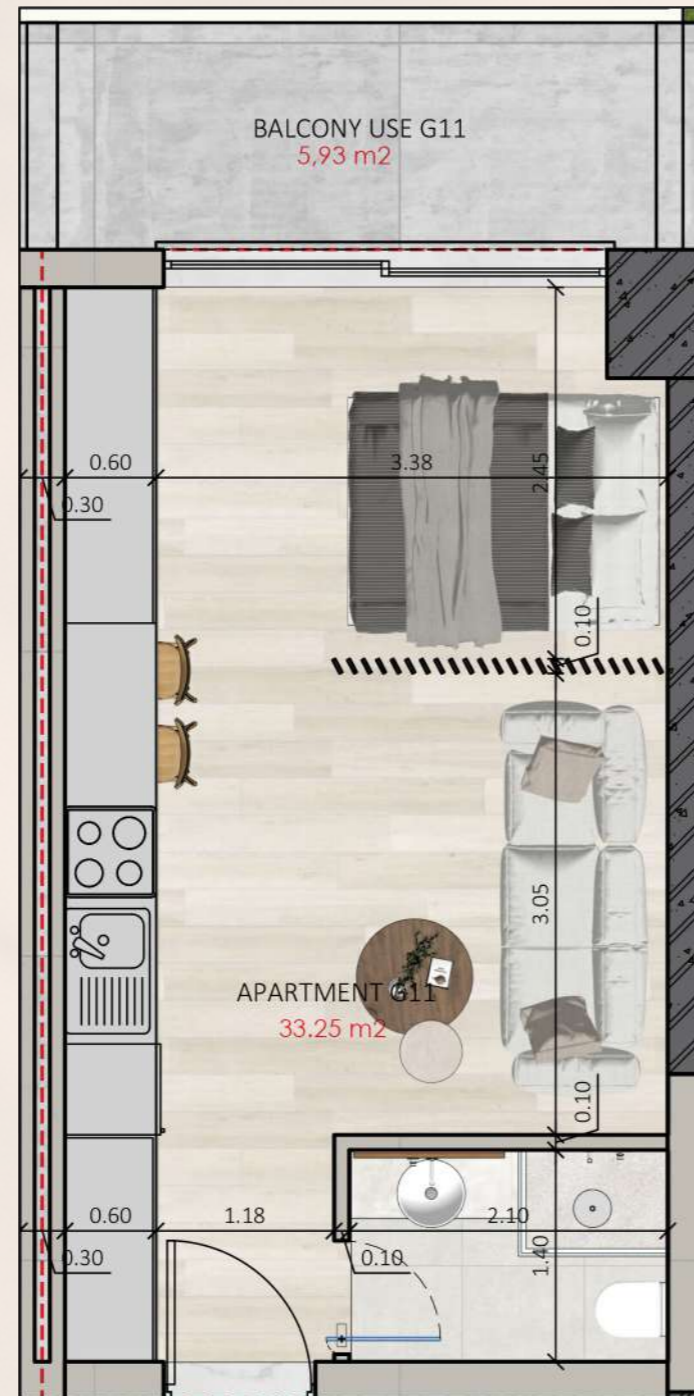
G9 AREA = 35.98 M²



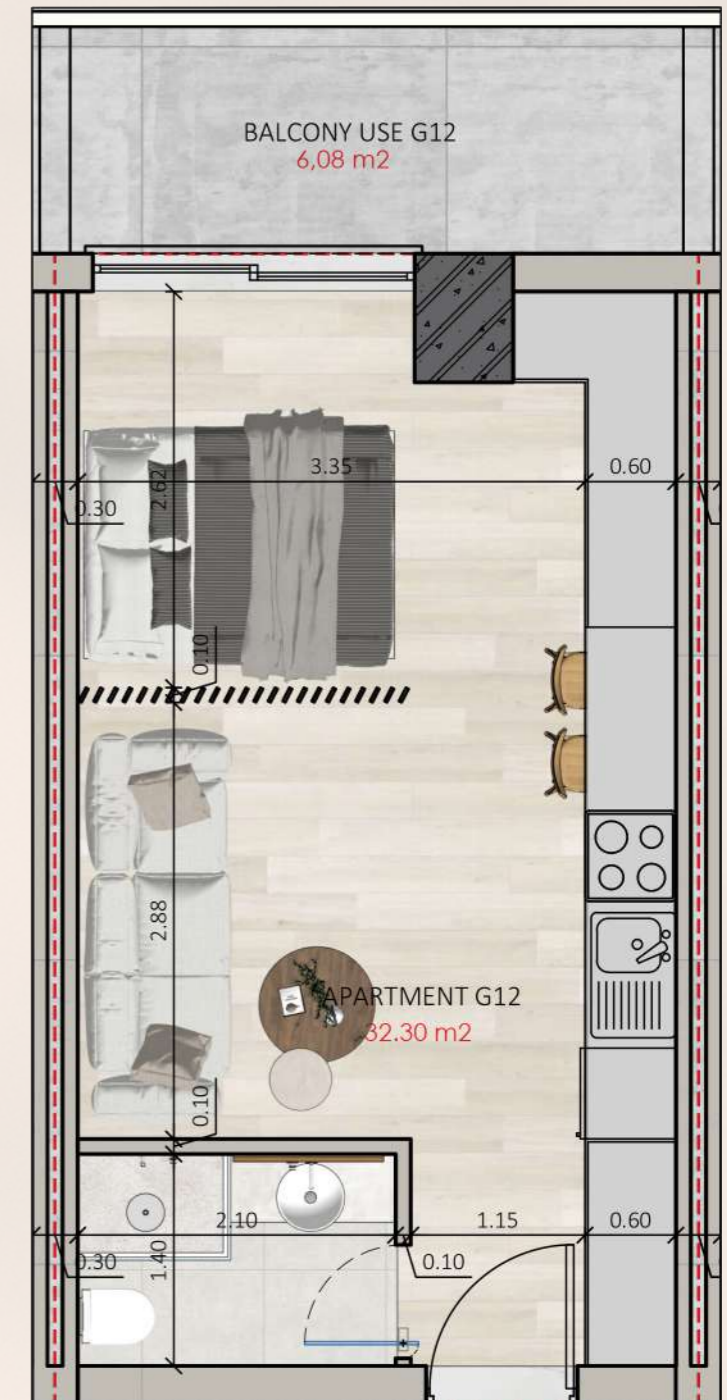
G10 AREA = 37.92 M²



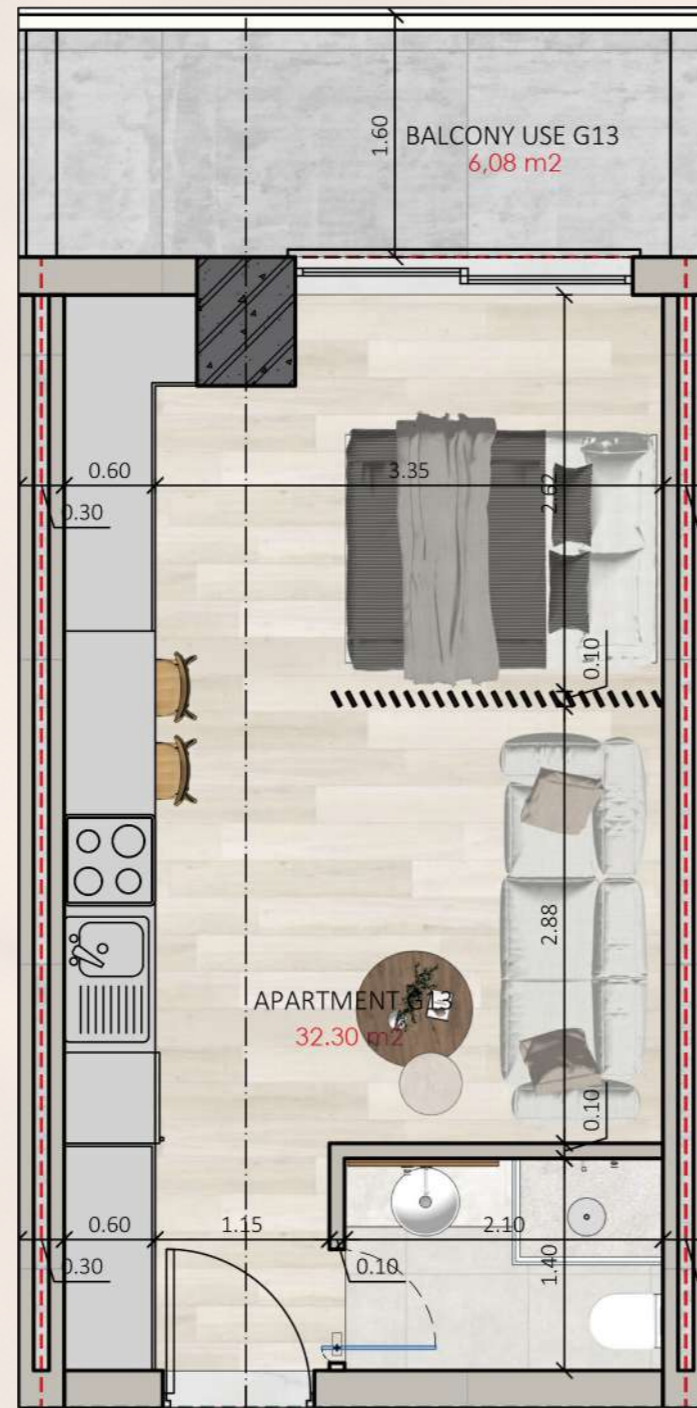
G11 AREA = 33.25 M²



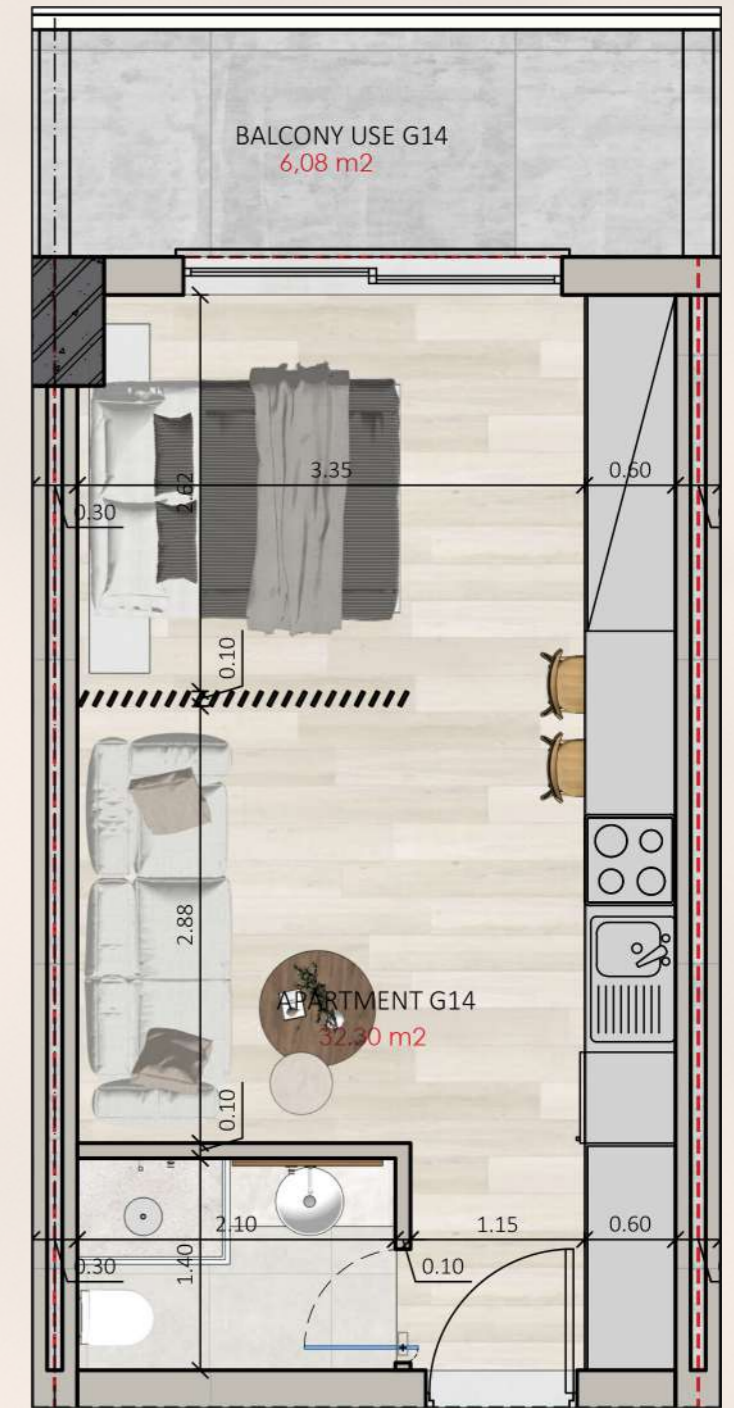
G12 AREA = 32.30 M²



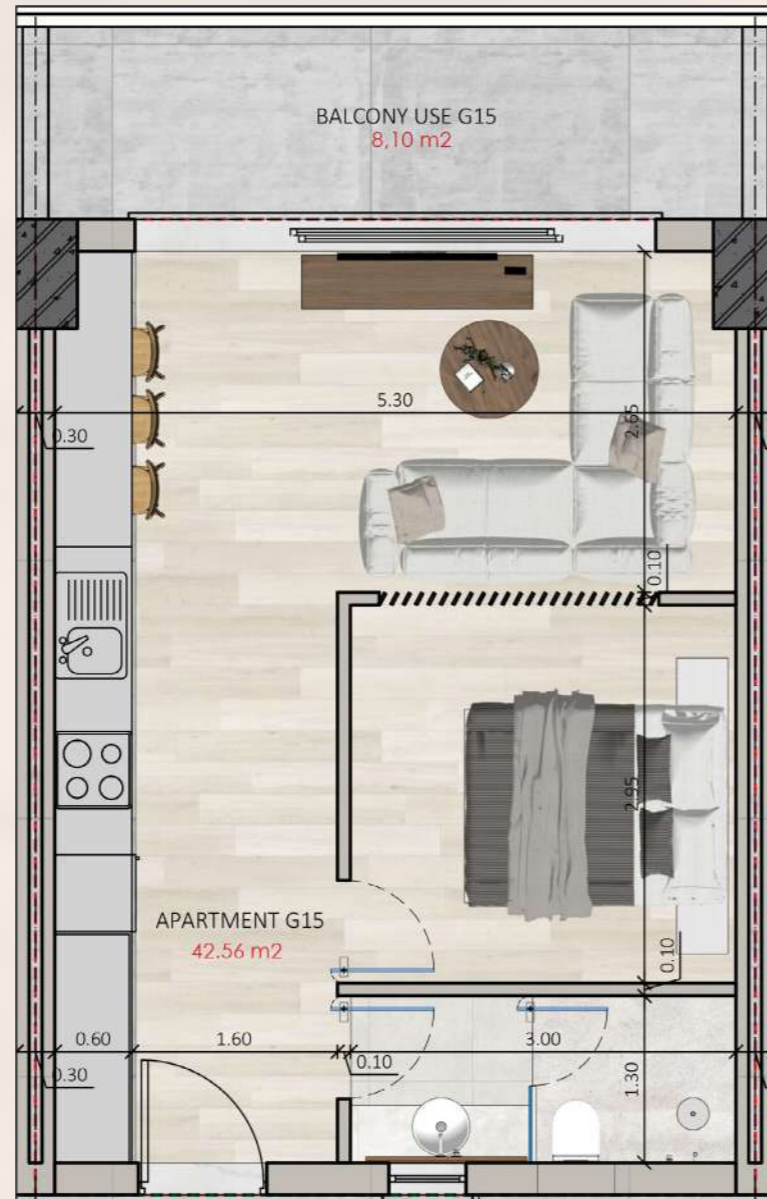
G13 AREA = 32.30 M²



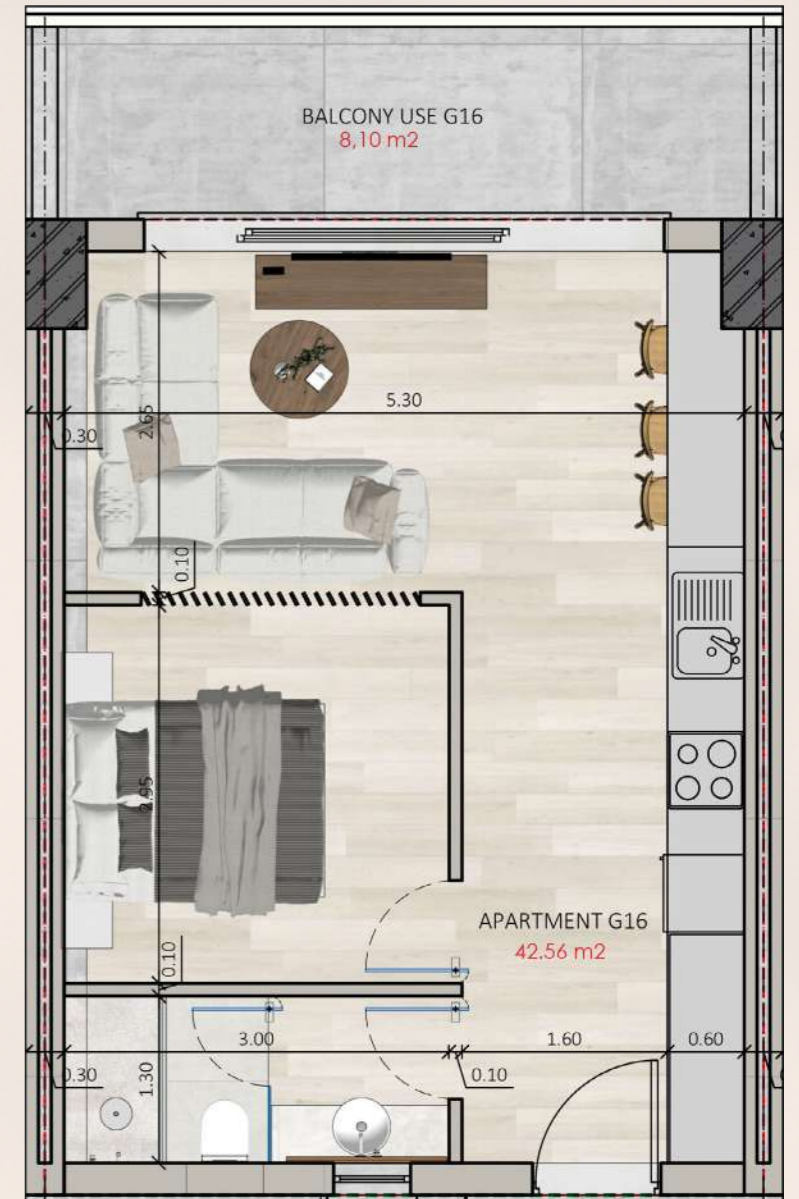
G14 AREA = 32.30 M²



G15 AREA = 42.56 M²



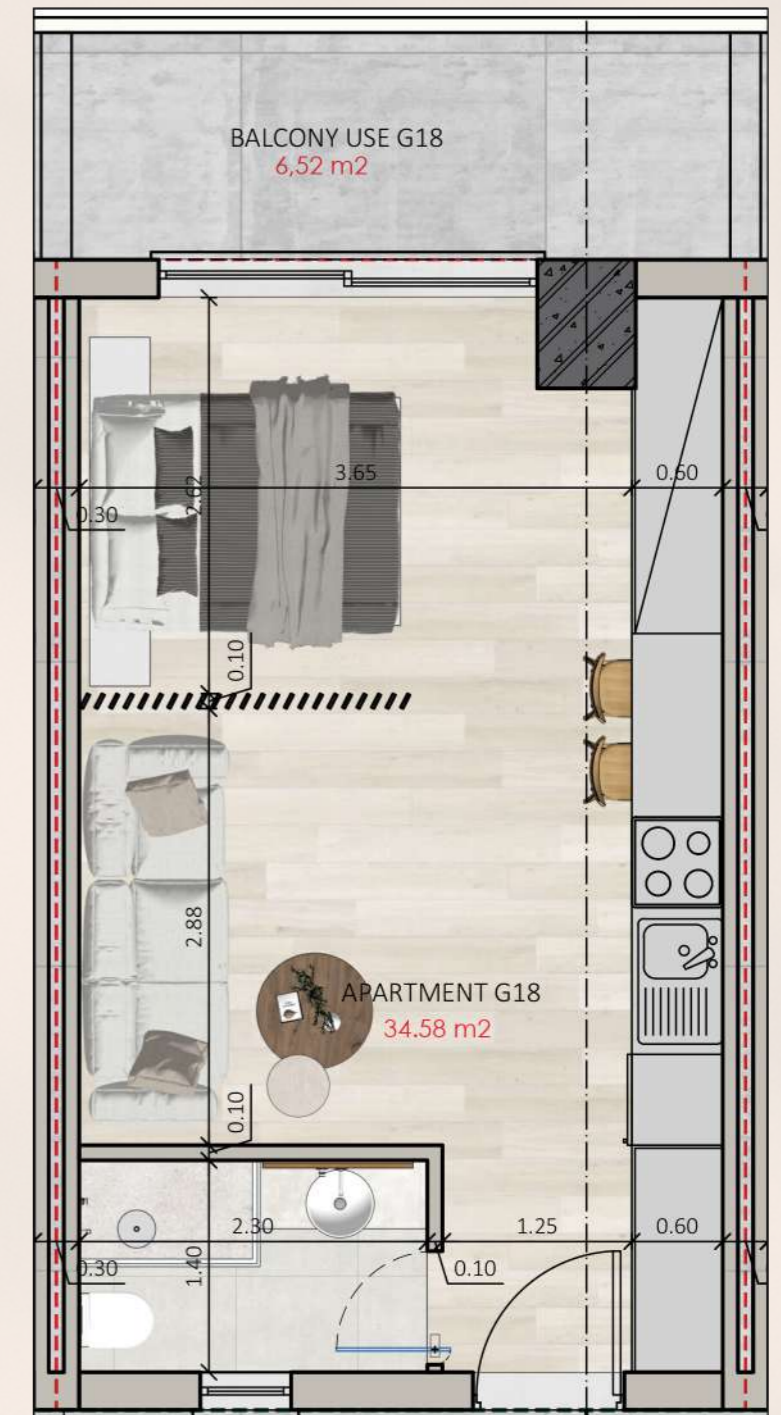
G16 AREA = 42.56 M²



G17 AREA = 34.58 M²



G18 AREA = 34.58 M²



G19 AREA = 39.70 M²



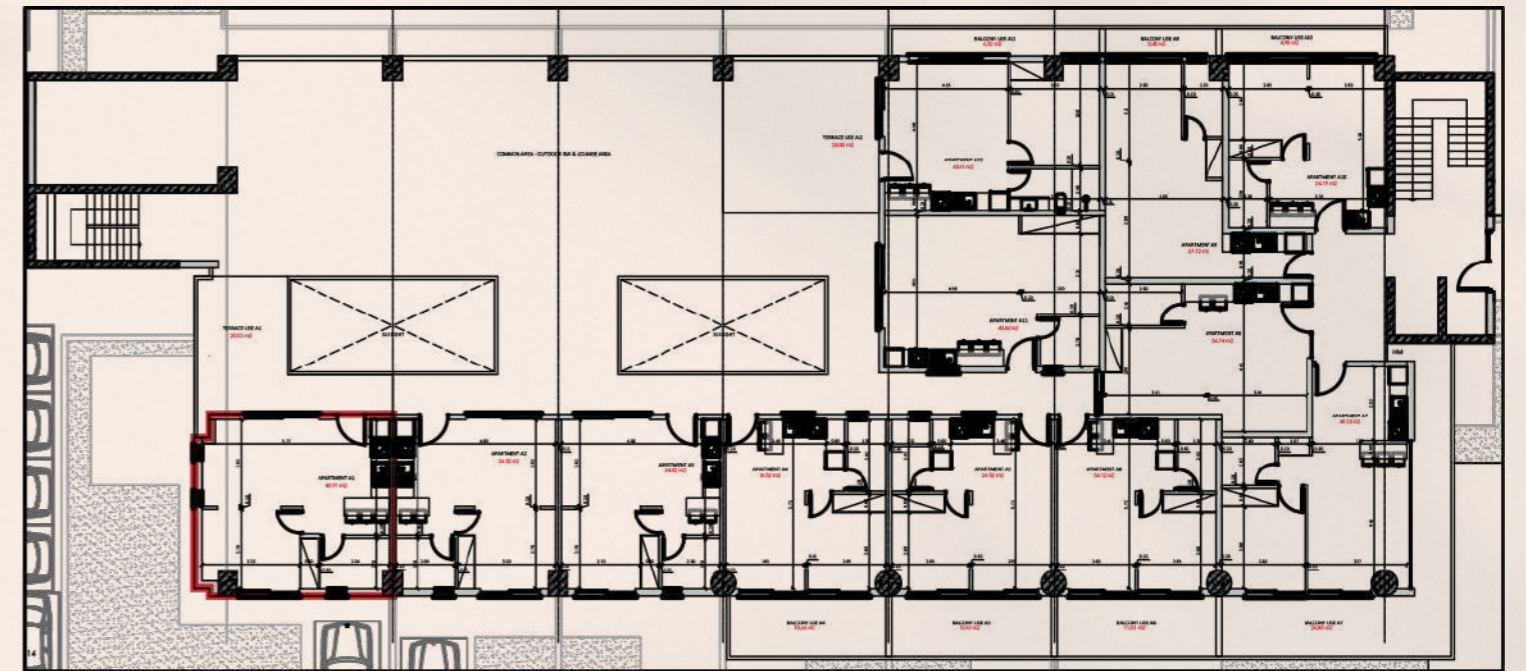
ZOI
GLYFADA



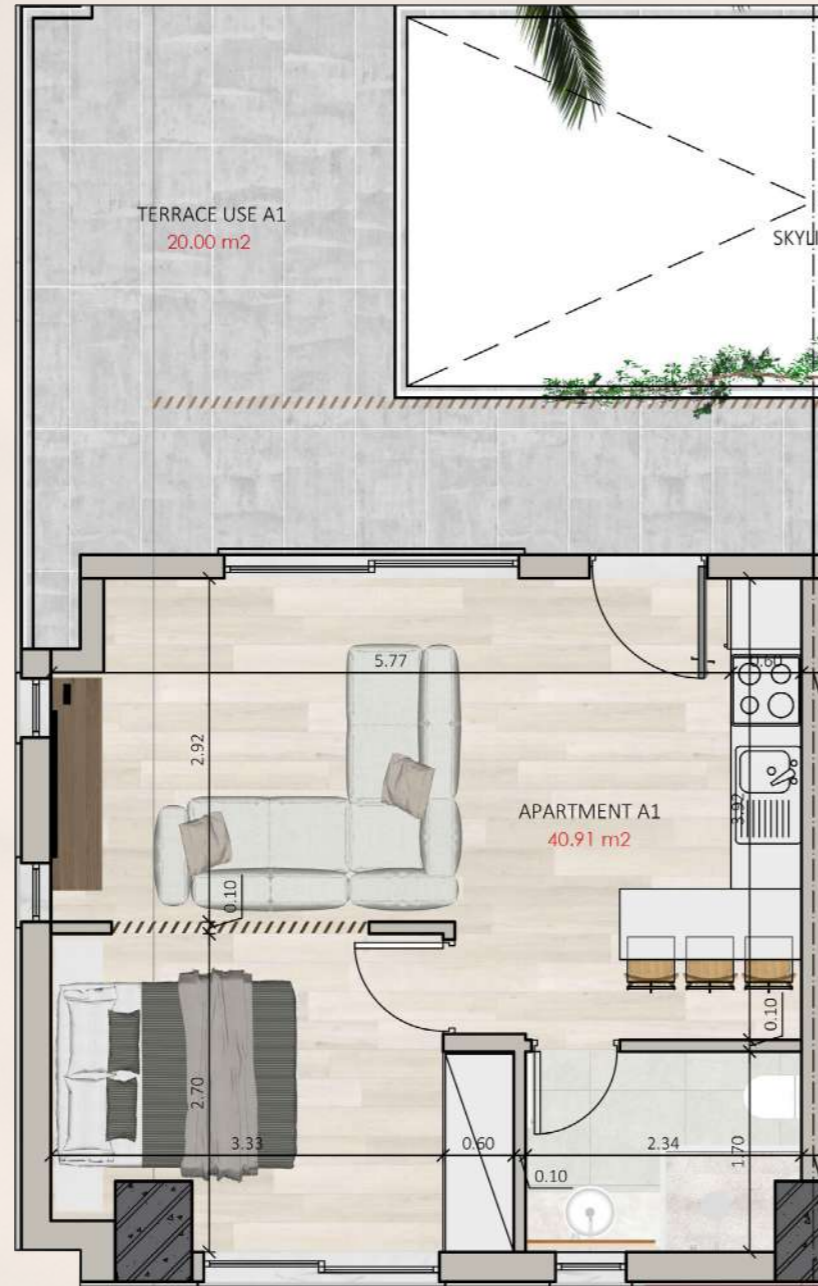




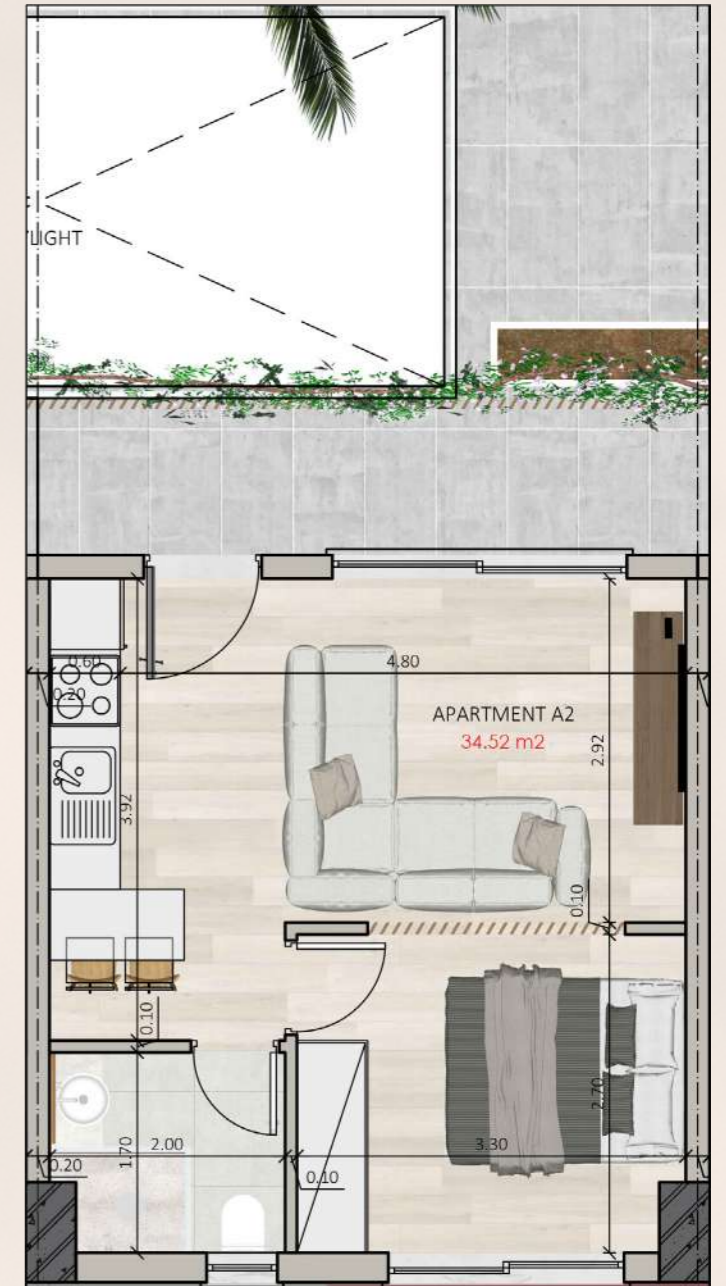
FIRST FLOOR



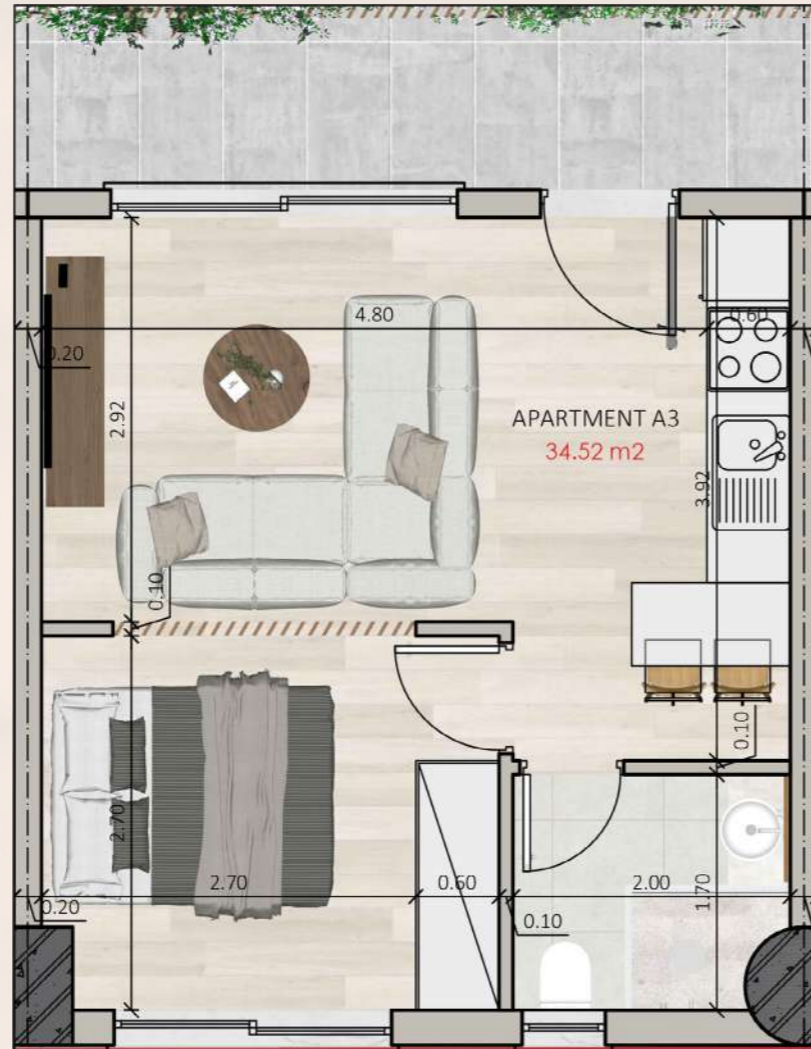
A1 AREA = 40.91 M²



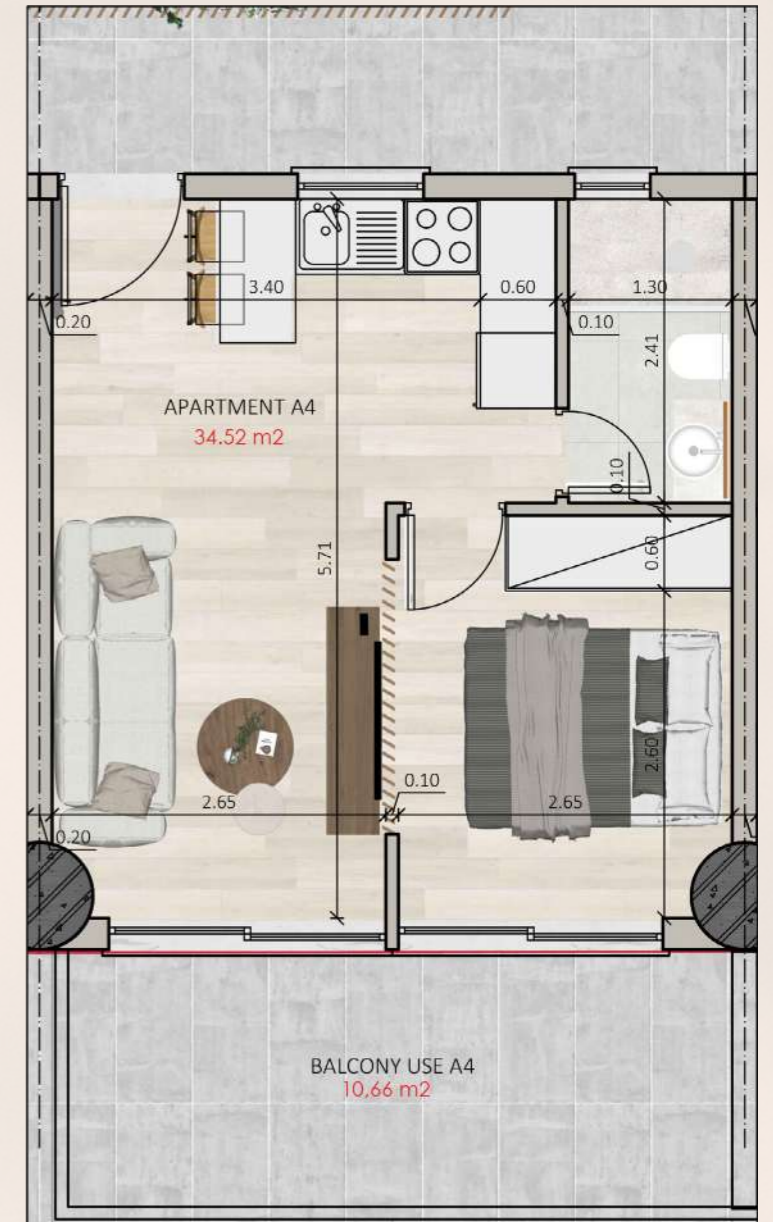
A2 AREA = 34.52 M²



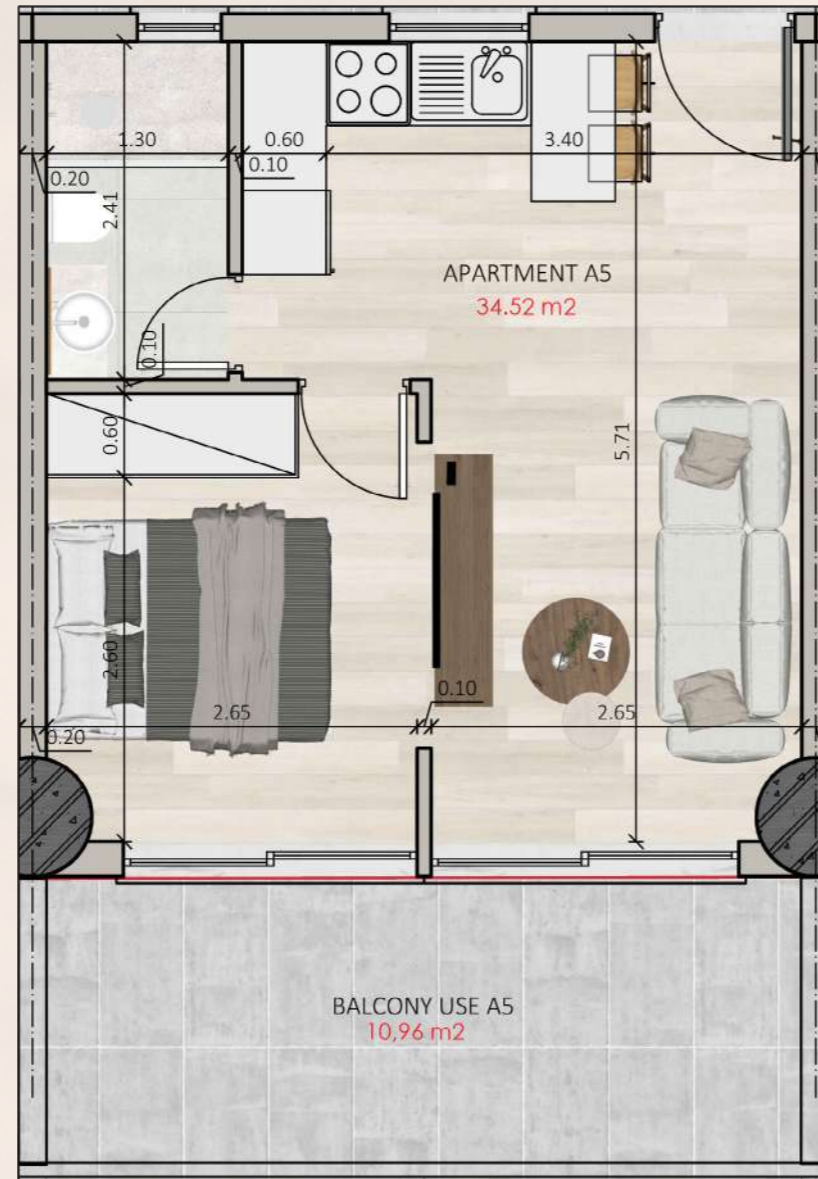
A3 AREA = 34.52 M²



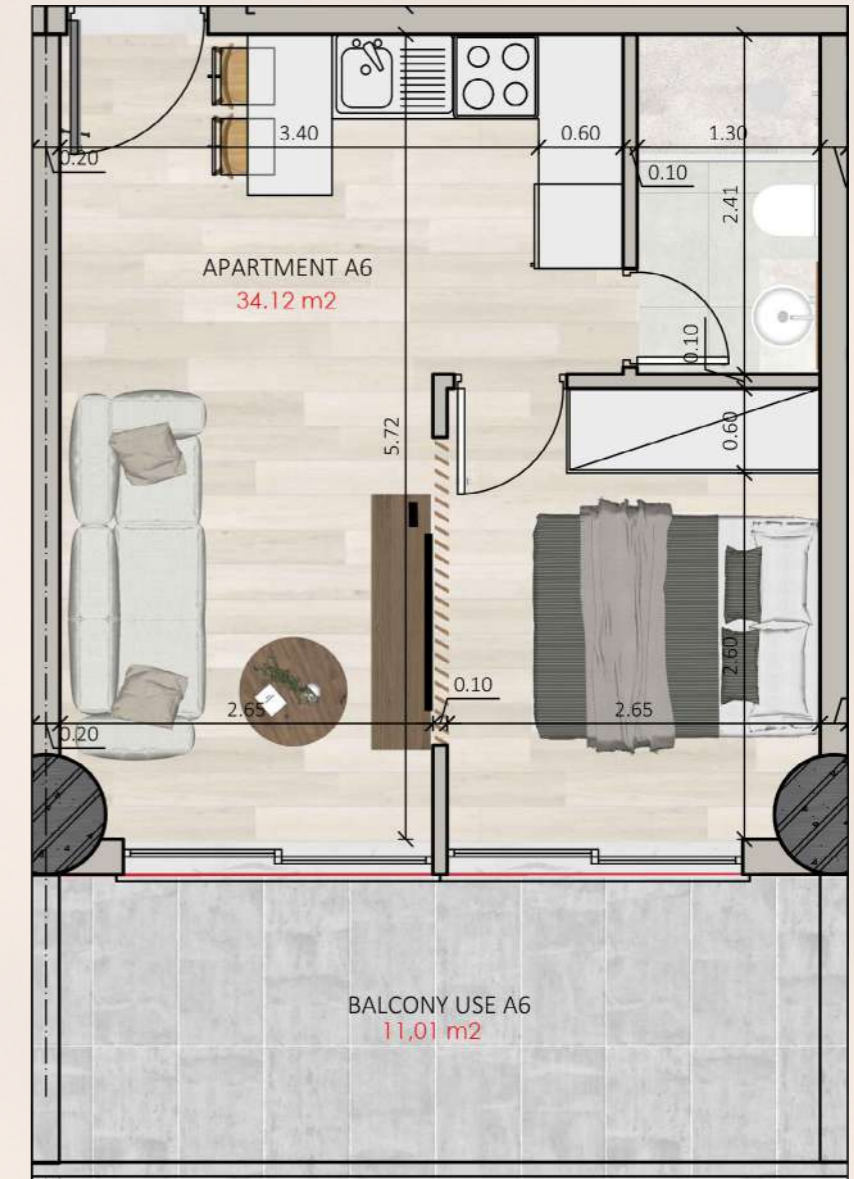
A4 AREA = 34.52 M²



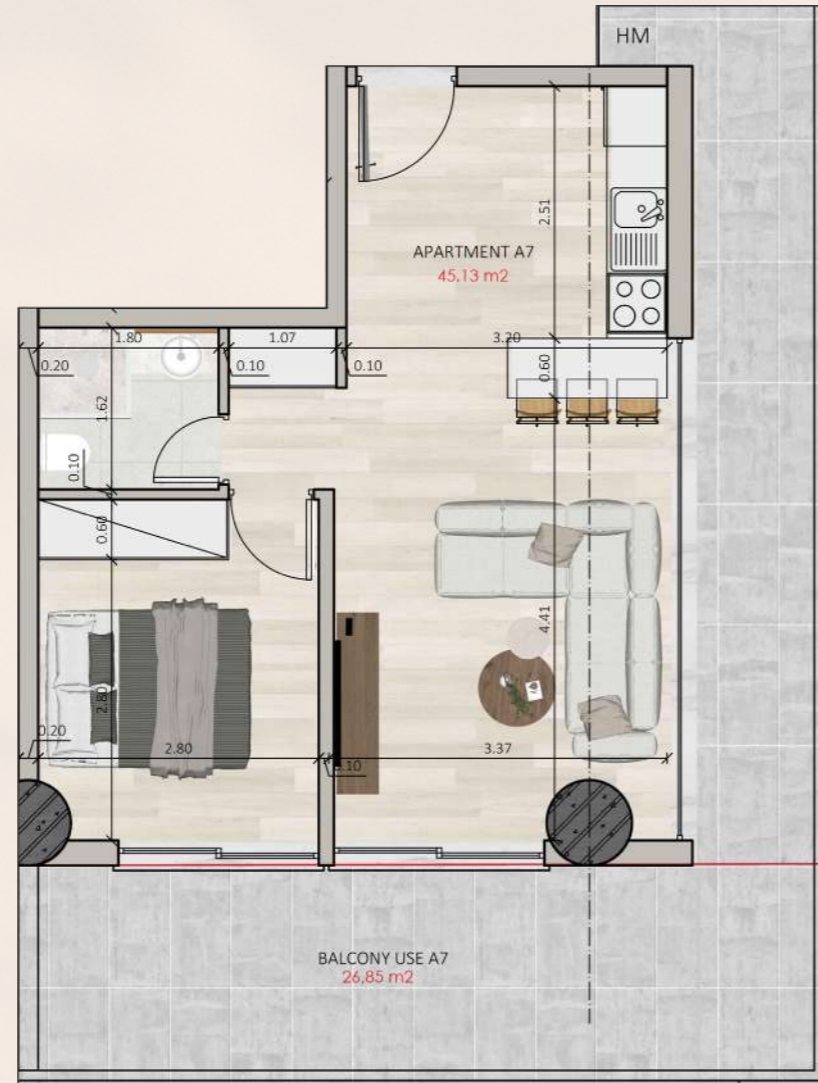
A5 AREA = 34.52 M²



A6 AREA = 34.12 M²



A7 AREA = 45.13 M²



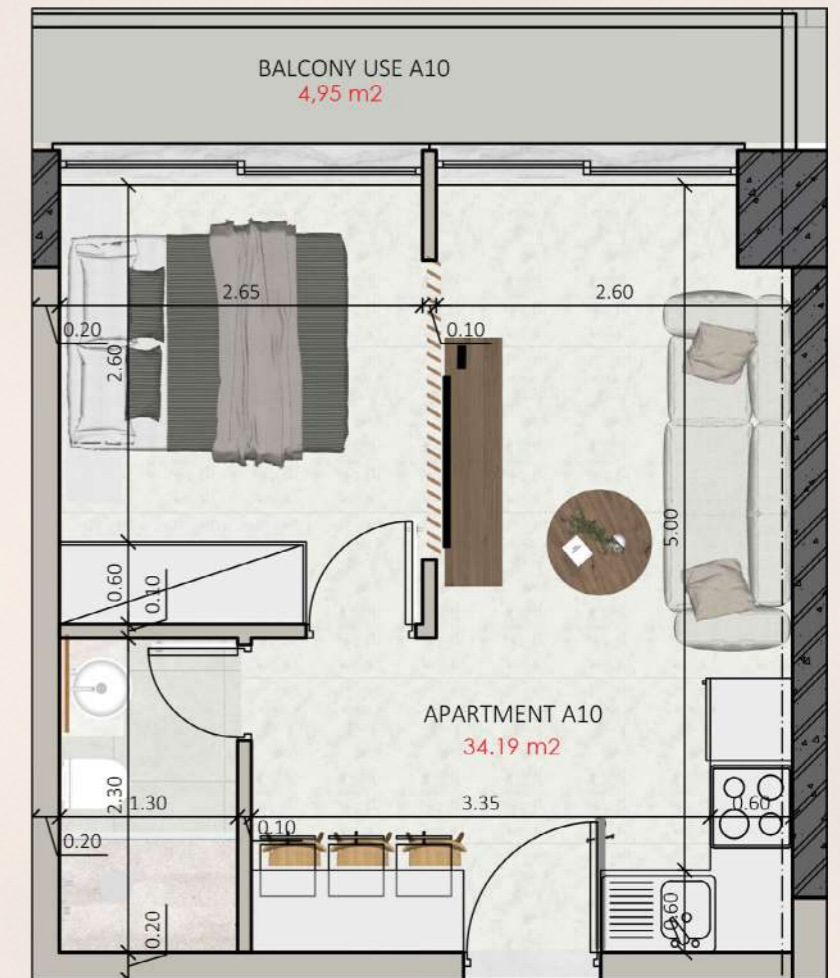
A8 AREA = 34.74 M²



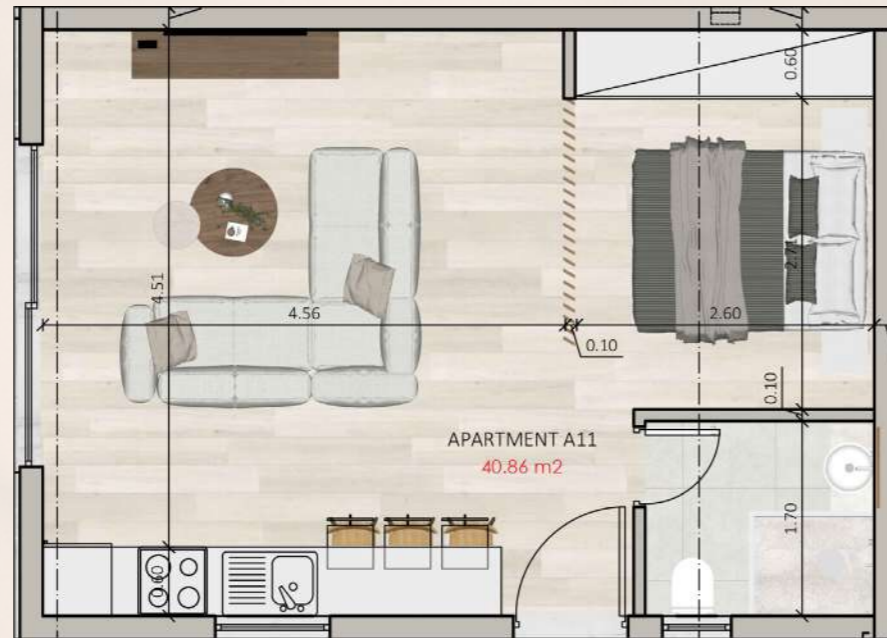
A9 AREA = 37.12 M²



A10 AREA = 34.19 M²



A11 AREA = 40.86 M²



A12 AREA = 40.41 M²















A VISION OF YOUR
NEXT CHAPTER

ZOI
GLYFADA

THE DEVELOPER *Aspect*

EXPANDING WITH PURPOSE A PORTFOLIO DESIGNED TO INSPIRE
A LIFE THAT THINKS, FEELS, CONNECTS, AND GROWS.

FROM CAIRO
TO THE UAE & GREECE

ASPECT'S MISSION IS TO CREATE LIVING ENVIRONMENTS BEYOND STRUCTURES, SPACES THAT NURTURE
WELL-BEING, INSPIRE INTELLECTUAL GROWTH, FOSTER MEANINGFUL SOCIAL INTERACTIONS, AND OFFER
EMOTIONAL SECURITY THE VISION IS TO BECOME A TRANSFORMATIVE FORCE IN REAL ESTATE
BY SHAPING EVERY IMPORTANT ASPECT OF MODERN LIVING.

STRATEGIC PARTNERS

Frontline[®]
CONSULTING





HOTLINE 17471

BY
Aspect

ASPECT-DEV.COM